



COURSE GUIDE

25/26

PRINCIPAL'S WELCOME

As the Principal of Franklin Sixth Form College, the only sixth form Ofsted-rated Outstanding provider in the region, it is my distinct pleasure to welcome you to our vibrant academic community. Choosing the right institution for the next phase of your education journey is one of the most significant decisions you will make.

At Franklin, we pride ourselves on fostering an environment that encourages intellectual curiosity, personal growth, and social responsibility. Our dedicated staff are committed to providing a supportive and challenging learning atmosphere where students can thrive both academically and personally.

Our college is not just a place to achieve an academic qualification; it is a community where lifelong friendships are forged, ideas are exchanged, and futures are built. We believe in the power of collaboration, and encourage our students to engage in the many Personal and Professional Development activities we offer that enrich each student's educational experience.

As you explore our prospectus, you will discover more about our wide range of study programme combinations, state-of-the-art facilities, trips and experiences and many resources available to support our students' academic and career aspirations.

I strongly encourage you to visit our campus, meet our staff and experience first-hand the dynamic and inclusive culture that defines Franklin Sixth Form College.

**I look forward to welcoming
you to Franklin.**

Wendy Ellis
Principal and CEO



CONTENTS

2. Welcome to Franklin

5. Why Choose Franklin?

6. Meet Our Class of 2024

8. The Best Facilities

10. Trips @Franklin

11. Personal and Professional Development @Franklin

18. Support @Franklin

20. Financial Support

22. Student Transport

24. Choosing your Study Programme

25. Entry Requirements

27. How to Apply

29. Courses

FIND OUT MORE

01472 875000

admissions@franklin.ac.uk

www.franklin.ac.uk

OPEN EVENTS

Wednesday 2nd October

Wednesday 6th November

Saturday 30th November

Saturday 1st February





WHY CHOOSE FRANKLIN?

- ✓ 100% Pass rate across vocational courses
- ✓ 98% Pass rate across all Level 3 courses
- ✓ Over 95% Positive destinations
- ✓ Region's widest range of academic and vocational courses
- ✓ Independent learning programmes
- ✓ Outstanding student support
- ✓ Exceptional personal and professional development opportunities
- ✓ State-of-the-art digital facilities
- ✓ University standard learning spaces
- ✓ Worldwide trips
- ✓ The only Ofsted rated Outstanding provider of sixth form education in the region

MEET OUR CLASS OF 2024



EVE BARKER

A Level Chemistry - A*
A Level Biology - A*
A Level Maths - A*
A Level Further Maths - B

Destination:
Gap year before
progressing to university



I will always treasure my time at Franklin; it's such a special place. I have felt so supported by my teachers and made friends for life. Being a student at Franklin has given me a head start in my future career.



PARTHIV SASAPU

King Edward VI Grammar School

A Level Maths - A*
A Level Physics - A*
A Level Further Maths A*
Economics - A

Destination:
Economics and Statistics at UCL



My teachers were so inspirational, they really made me want to be my best. I didn't just get an education. I got so much more.



LILLIE MAE GREGORY

Somercotes Academy

A Level Biology - A
A Level Chemistry - B
A Level French - B

Destination:
Hull York Medical School - Medicine



College has been great. Everyone has been super helpful and so supportive. It's an amazing environment, and the facilities are excellent.



EDWARD TYE

A Level Maths - A*
A Level Further Maths - A
A Level - Economics - A
A Level - Spanish - B

Destination:
Durham University - BSc Maths



I thoroughly enjoyed my time at Franklin. The teachers were extremely supportive.



HENRY PAGE HIDD

Louth Academy

BTEC Sports Coaching (Football Shadow Scholarship) - D*D*D*

Destination:
University of Sunderland -
Sport & Rehabilitation Therapy



Franklin gave me the opportunity to play and learn professional-level sports, as well as the chance to work in schools, where I learnt skills that I'll take to university with me.



MEERAIL HAFEZ

The Academy Grimsby

BTEC Uniform Protective Services - D*D
BTEC Travel & Tourism - D

Destination:
University of Northumbria -
Forensic Science with Criminology



I've had a wonderful experience. The teachers have been excellent and so supportive.



THE BEST FACILITIES



FANTASTIC SPORTS FACILITIES



360° IMMERSIVE SPACE



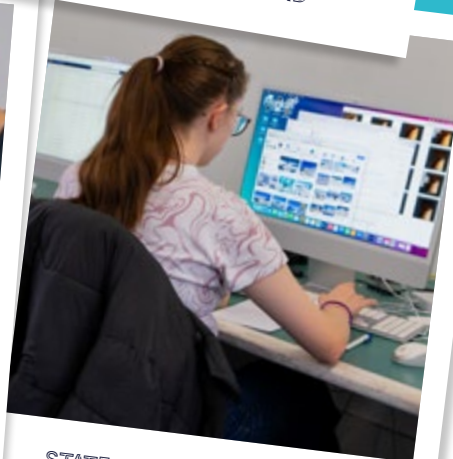
COVERED COURTYARD



ESPORTS SUITE



PROFESSIONAL PHOTOGRAPHY STUDIO



STATE-OF-THE-ART MAC SUITE



THE BRIDGE



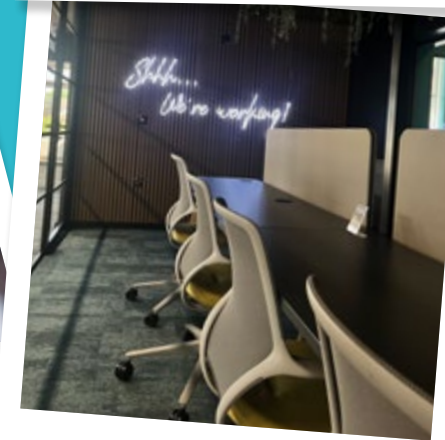
THE BUZZ & FRANKIE'S



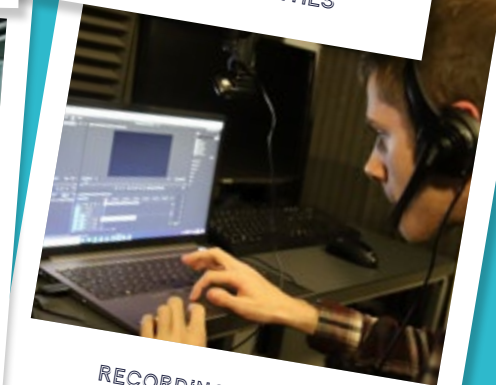
PERFORMANCE FACILITIES



CENTRE FOR PROFESSIONAL DEVELOPMENT



UNIVERSITY STYLE LEARNING SPACES



RECORDING FACILITIES



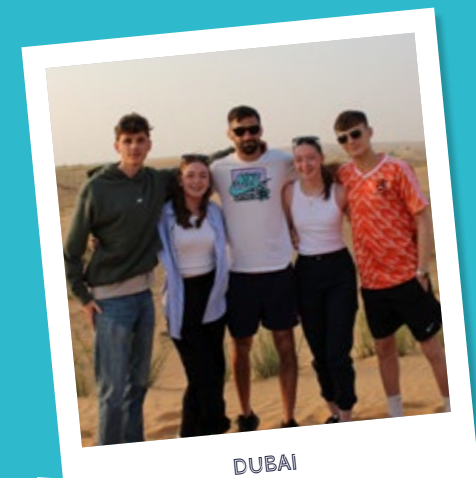
FRANKLIN GAMES

“The facilities at Franklin have been super helpful for my courses, and I've really enjoyed the college environment.”

TRIPS & VISITS @FRANKLIN

At Franklin, we are known for providing incredible opportunities to our students, and this year, our students have had the chance to visit Dubai, Paris and Malta, to name a few! We know how important it is to give you the opportunity to experience the world beyond the classroom. That's why our educational trips and visits have been put together to bring learning to life, all whilst further developing your passion for your chosen subjects.

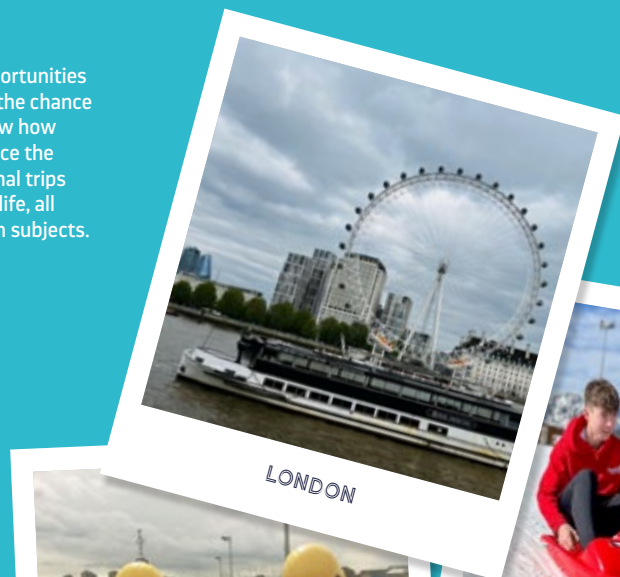
“There are trips for everyone. Making memories that will last a lifetime is a massive part of College life”



DUBAI



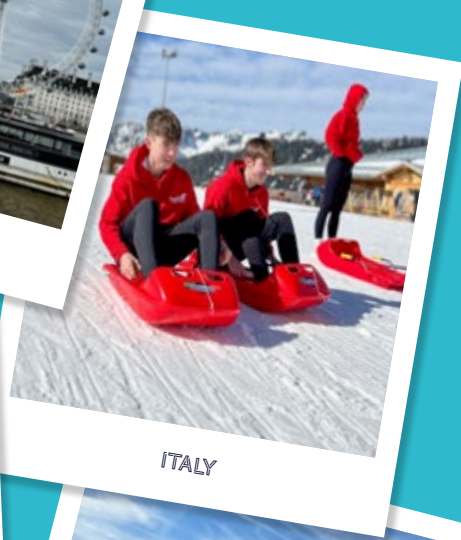
ATHENS



LONDON



INDUSTRY & UNI VISITS



ITALY



PARIS

“I didn't know any other students going on the trip. It really pushed me out of my comfort zone, but I had a great time and made lots of new friends.”

Centre for Professional Development

PERSONAL AND PROFESSIONAL DEVELOPMENT@FRANKLIN

Your studies are central to getting you started on your future career path, but we offer more than a classroom through our exciting Personal and Professional Development programmes (PPD).

As a student at Franklin, you'll be able to mix and match PPD activities all tailored to your future aspirations and interests, developing transferable skills. With endless opportunities to take part in memorable experiences and make new friends.

Our Personal and Professional Development team and Centre for Professional Development (CfPD) are made up of a friendly set of individuals, offering a range of experiences and opportunities all focused on helping you achieve your goals.



Studies show that students who take part in personal and professional development activities are statistically more likely to obtain a bachelor's degree, show advanced academic performance, exhibit improved leadership and time management skills, as well as develop confidence.



PERSONAL DEVELOPMENT @FRANKLIN

As part of your Personal and Professional Development programme, you'll have the chance to participate in some clubs, activities, societies, trips and visits to support your personal development. With over 50 different clubs on offer, you'll be spoilt for choice. You might want to choose a club that supports your course, a sports activity, or try something entirely new, and if you can't find a club for you, you can even start a new one!



FIND OUT MORE



PROFESSIONAL DEVELOPMENT

@FRANKLIN

Our CfPD team offer links with universities, higher apprenticeship providers, and employers to boost your skill set, provide valuable experiences, and significantly improve your employability and life chances.

The team manages the Professional Development element of PPD, working with local and national partners to organise interactive talks, work experience, internships, masterclasses, industry and university visits and much more, helping you see your future and develop the skills needed to reach your dream career.

Additionally, you can also access one of our fantastic Level 6 careers advisors who are on hand to help you with your future aspirations and guide you in developing the skills you need to get where you want to be.

You will also get involved in a range of events and a host of other programmes to maximise your chance of career success. To find out more about what to expect from CfPD, scan the QR code and find out about all of the amazing things CfPD offer:



OUR PROFESSIONAL PROGRAMMES

Find out more about each of our programmes.....



CAREER ACADEMY

Career Academy offers everything you need to get ahead in your chosen career. We have four themed academies: Business & Logistics, STEM, Health & Social Care, and Law.



HIGH FLYERS

An opportunity for our most academically able students to gain the skills and experience required to progress onto higher apprenticeships or the most prestigious universities.



TEACHING ACADEMY

A year-long programme in partnership with Lincoln's Bishop Grosseteste University. You'll undertake ten placements at a local school, gaining invaluable hands-on experience in a teaching environment.



MENTAL HEALTH ACADEMY

In partnership with Navigo and The University of Hull, this programme will enable you to understand the role of a mental health specialist and the core skills and values needed to build effective relationships.



ASPIRING FUTURE MEDICS

Intended for students who want to become a doctor, vet, or dentist. You'll attend a variety of dedicated sessions including talks from medical professionals and university admission teams to support you with your application to some of the most competitive degrees.



DEBATE CLUB

Our popular Debate Club allows you to participate in lively debates on a range of current and important issues. As well as debating opposing teams at Franklin, you'll also get the opportunity to test your skills by competing against other colleges nationally. It's an excellent way to build your key communication and research skills, foster healthy, proactive discussion, and form strong connections.





SOCIAL WORK ACADEMY

This exciting programme will equip you with the skills to discover all you need to become a social worker. Delivered in partnership with North East Lincolnshire Council, Focus, and Hull University, it concludes in two masterclasses at Hull University where you'll be introduced to studying social work at degree level.



ALLIED HEALTH PROFESSIONALS

In partnership with Grimsby Hospital, Care Plus Group, Navigo, and the University of Hull, this programme offers you the opportunity to engage with professionals and explore the different careers and pathways this exciting sector offers.



SPORT LEADERSHIP ACADEMY

This programme combines academic classroom lessons with practical sessions. Our Sports Leaders run a popular programme of sporting events and competitions with local primary and secondary schools with the local Schools Sport Partnership.



TALENTED ATHLETE PROGRAMME

Every year, we welcome talented athletes who want to nurture their sporting skills whilst progressing with their education. You'll work with a dedicated member of staff who will support and help you balance your sports and study commitments.

BOOST YOUR OPPORTUNITIES

Did you know you can complete an Extended Project Qualification (EPQ) alongside your studies? Dive into a topic of your choice to support critical thinking, research skills, creativity, and time management. You'll also gain more valuable UCAS points.



SOCIAL SCIENCE ACADEMY

The Social Sciences Academy is a programme for students who study two Social Science subjects and/or Law. It offers students the opportunity to take part in guest lectures and Master Classes, delivered by University Lecturers (Hull University and BGU) and to attend talks on contemporary topics led by experts in their field. Students can also take part in work experience.



SUPPORT @FRANKLIN

Every student has a right to come to Franklin and feel safe, supported, and welcomed. That's why we take safety and support seriously and strive to ensure our College is a nurturing and inclusive environment for all.

Aspire and your progress coach

Aspire is an essential part of your Study Programme. You'll hear from guest speakers and participate in group sessions and one-to-one meetings. You'll work with your dedicated Progress Coach, who will help and guide you throughout your studies.

Your Progress Coach is there to help you with anything you may need during your time at Franklin. They'll support you in deciding your next steps after Franklin, help with your CV, application forms, interview techniques, and much more. If you're looking to pursue a future at university, they will be with you every step of the way and support your UCAS process.

Outside of Aspire, you will carry out Independent Study for each of your chosen subjects, participate in our exciting and attractive Personal and Professional Development Programmes and fully immerse yourself in College life as you progress in your journey to becoming a well-rounded, highly employable young adult. College life is about being more independent and has been designed to allow you to choose when and what to study.

Learning Support

We're experienced in supporting students with a wide range of learning difficulties and physical disabilities. Our staff receive specialist training to support our College Community and strive to meet student needs, whatever they may be. Whether it's a supported transition programme, arranging exam access, setting tailor-made targets or one-to-one key working, our individualised approach means that students receive the support they need to thrive and excel academically.

Wellbeing

The Wellbeing of our College Community is a priority at Franklin.

Our Wellbeing Team uses the Thrive approach, working with students to build emotional resilience and develop their self-care. We provide internal pastoral support as well as referring to a range of specialist external organisations. Did you know we also have our lovable Therapy Dogs who visit daily for students to interact with?

Support Groups such as our LGBTQIA+ group take place weekly, and there is a wide range of Personal and Professional Development opportunities to get involved in to build friendships and de-stress. There are quiet areas around College if you prefer somewhere peaceful to study or hang out as well as our bookable games area.

Home Education

We welcome applications from students who've been home-schooled and wish to move into a college environment. We work with home-schooled students to offer a transition programme to Franklin and ensure we build an offer to suit individual needs. Contact our Admissions Team on **01472 875000** to discuss your individual needs and find out about the support available to you

MORE INFO



Franklin is a place where you can focus in on the things you love, feel supported whilst doing so and leave prepared for what comes next



YOUR STUDY PROGRAMME

OUR CURRICULUM

The widest range of courses in the region

Level 2 & GCSE

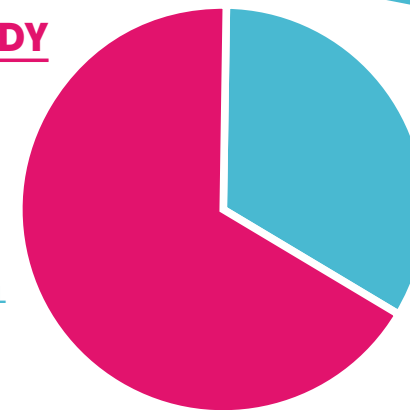
A Levels, Vocational - BTECs, CTECs & T-Levels

CLASSES & INDEPENDENT STUDY

- COURSES
- REGISTERED INDEPENDENT STUDY

DEVELOPING & UPSKILLING YOU

- PERSONAL & PROFESSIONAL DEVELOPMENT
- ASPIRE
- ENRICHMENT AND WIDER EXPERIENCES



WEEKLY SCHEDULE @FRANKLIN



FINANCIAL SUPPORT

Student Financial Support Fund

We have a robust range of financial support for eligible students and can help with essential course costs such as printing, textbooks, and equipment.

Students in priority groups can receive a bursary of up to £1,200 per year. As soon as your application is approved, we'll contact you to discuss how best to utilise the bursary for your educational needs.

Daily Meal Allowances

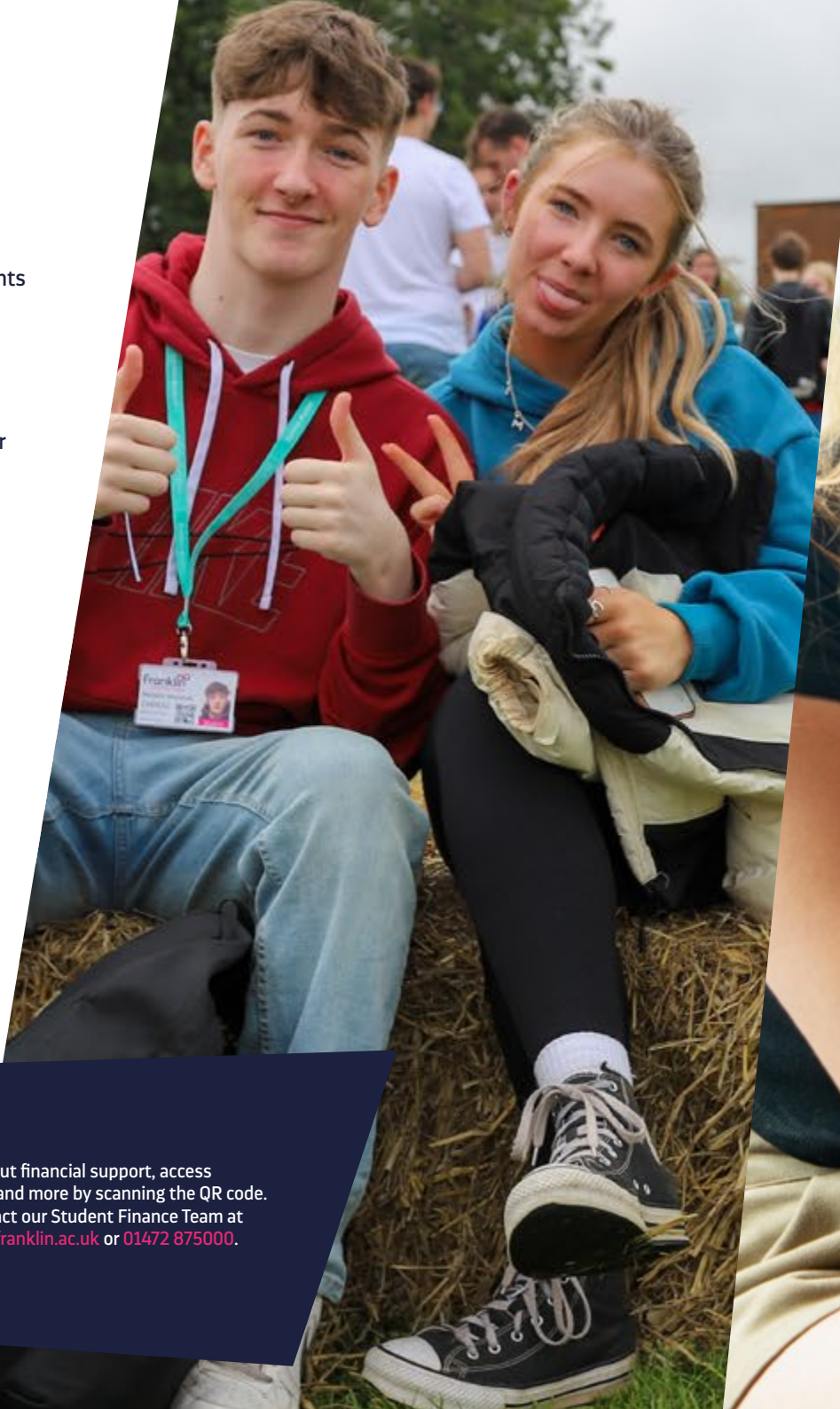
If you have a household income which fits the threshold or received free school meals in secondary school, daily meal allowances may apply to you. If eligible, we will credit a daily meal allowance to your student card.

Student Financial Support Award

Students who live in a household with an income below £36,000 (including most benefits) will be eligible for a discretionary financial support award. This supports the cost of trips and necessary resources while studying at Franklin. If eligible, you can also choose between a travel pass for use on our buses (if you live more than one mile from College) or a Daily Meal Allowance.



Find out more about financial support, access eligibility criteria, and more by scanning the QR code. You can also contact our Student Finance Team at student.finance@franklin.ac.uk or 01472 875000.



Tech Support

We encourage you to bring your device to College, where you can access various tech support. Our expert Tech Team provides a variety of support for students, from offering free software and access to smartphones and laptops, to help with emails and access to Google Classroom and Office 365. They're on hand throughout your time at College to ensure reliable tech support is available whenever you need it.

Skills Desk @Franklin

The Skills @desk provides you with a range of support from skills workshops, dedicated time to work on EPQs and coursework, general study support and support recovering lost learning in cases of unavoidable absence.

Franklin's dedicated Skills@ team are on hand daily to offer support to our students to develop and enhance essential skills, not only for academic achievement but also for success and progression beyond Franklin whether in employment, an apprenticeship or further academic study.

Encouraging students to take control of their own independent learning promotes increased confidence, a better life-study balance, improved wellbeing and provides them with the tools they need to achieve their full potential.

STUDENT TRANSPORT

We operate multiple bus routes across Lincolnshire, ensuring our service is safe, affordable, and efficient. You only have to pay £1 each way. Financial support is also available if needed.

LOUTH ROUTE 1

Legbourne

Kenwick Road

Louth Bus Station

Bolingbroke Road

Cheapside

Waltham

Franklin

LOUTH ROUTE 2

Louth Academy Cordeaux

North Holme Road

Fotherby

Utterby

North Thoresby

Holton le Clay

Tollbar

Franklin

LINCOLNSHIRE WOLDS ROUTE

Brookenby

Binbrook

Tealby

Market Rasen

Holton le Moor

Nettleton

Caistor

Cabourne

Aylesby

Laceby Square

Franklin

BRIGG ROUTE

South Kelsey

North Kelsey

Brigg

Wrawby

Barnetby

Kirmington

Great Limber

Keelby

Little London

Stallingborough

Healing

Great Coates

Wybers

Great Coates Road

Franklin

CLEETHORPES ROUTE

North Sea Lane

King's Road

Chichester Road

Hardys Road

Cromwell Road

Alexandra Road

Clee Road

King George Stadium

Franklin

SCOTTER & GRIMSBY ROUTE

Scotter High Street

Kirton in Lindsey

Redbourne

Hibaldstow

Scawby

Broughton

Durban Road

Pasture Street

Hainton Avenue

Weelsby Road

Franklin

ALFORD ROUTE

Alford

Woodthorpe

Beesby

Malby le Marsh

Strubby

Withern

Gayton Top

Great Carlton

Little Carlton

Manby

Grimoldby

South Cockerington

North Cockerington

Alvingham

Yarburgh

Covenham

Fulstow

Tetney

Scartho

Franklin

HUMBER BANK ROUTE

Barton Upon Humber

Goxhill

Thornton Curtis

Wootton

Ulceby

East Halton

South Killingholme

Habrough

Immingham

Stallingborough

Franklin

LINCOLNSHIRE COAST ROUTE 1

Huttoft

Sandilands

Sutton on Sea

Trusthorpe

Mablethorpe

Rotton Row

Theddlethorpe St Helen

Mar Dyke East

Saltfleet

North Somercotes

Grainthorpe

Marshchapel

North Cotes

Tetney

Franklin

LINCOLNSHIRE COAST ROUTE 2

Grimsby Road

Carr Lane

St Peter's Avenue

Highgate

Sandringham Road

Davenport Drive

Humberston Road

Church Avenue

Humberston Avenue

Peaks Lane

Franklin



Free WiFi on all our buses



CHOOSING YOUR STUDY PROGRAMME

Create your study programme by choosing from over 70+ courses at Franklin. We have a fantastic reputation for supporting our students across GCSE, Level 2 and Level 3 Vocational courses and A Level courses to achieve their best. At Franklin, you can be sure, there is a programme to suit you, no matter what you choose.

Join us at one of our fantastic Open Events to find out more about what Franklin has to offer and chat with the team about the opportunities available for you.



Your study programme is made up of your chosen courses as well as Personal and Professional Development Activities to develop your skills and aspirations whilst guiding you, along with ASPIRE and Independent Study.

LEVEL 2

This is a fantastic way to prepare for your dream future. We'll be there to guide and support you every step of the way. You'll spend 3 years with us, starting with Level 2 for one year followed by Level 3 for two years.

When studying on a Level 2 course, you will combine your chosen course alongside GCSE Maths, English, or both and you'll also get to take part in a range of opportunities and experiences as part of our Personal and Professional Development Programmes. Level 2 is a great foundation for progressing onto a Level 3 programme after successfully completing your first year:

Level 2 courses:

- Business
- Creative Computing
- Creative Media
- Health & Social Care
- Public Services
- Travel & Tourism

Selecting your Level 2 courses

Example 1

BTEC Level 2 Business (Double)	ASPIRE & PPD	GCSE English
--------------------------------	--------------	--------------

Example 2

CTEC Level 2 Creative Media (Double)	GCSE English	GCSE Maths
--------------------------------------	--------------	------------

Example 3

CTEC Level 2 Health & Social Care (Double)	ASPIRE & PPD	GCSE Maths
--	--------------	------------

LEVEL 3

Mix and match your courses to suit you.

Choose from over 70+ courses ranging from A level, vocational, and T Levels to develop the skills and knowledge you need to achieve your chosen career path.

Level 3 courses:

- | | | | |
|------------------------------------|-------------------------------|--------------------------------|--|
| • Ancient History | • Finance | • Digital Film & TV Production | • Further Maths |
| • History | • Travel & Tourism | • Film Studies | • Biology |
| • Government & Politics | • Management & Administration | • Drama & Theatre Studies | • Applied Human Biology |
| • Geography | • English Language | • Performing Arts | • Physics |
| • Philosophy and Ethics | • English Literature | • Music | • Chemistry |
| • Fine Art | • French | • Music (Performing – RQF) | • Engineering |
| • Art, Media & Design (Foundation) | • Spanish | • Dance | • Applied Science |
| • Graphics | • Health & Social Care | • Applied Psychology | • Sport |
| • Fashion & Textiles | • Education & Early Years | • Psychology | • Physical Education |
| • Photography | • Nursing | • Criminology | • Uniformed Protective Services |
| • Business | • Creative Computing | • Sociology | • Grimsby Town Football Shadow Scholarship |
| • Business Studies | • Computer Science | • Applied Law | |
| • Economics | • Digital Games Design | • Law | |
| | • Esports | • Maths | |

Selecting your Level 3 courses

Example 1 - 3 x Single option A levels

A Level Maths	A Level Physics	A Level Chemistry
---------------	-----------------	-------------------

Example 2 - 3 x Single option mixed courses

BTEC Sport	A Level Psychology	BTEC Applied Science
------------	--------------------	----------------------

Example 3 - Single and Double course options

Level 3 Criminology	BTEC (Level 3) Applied Science (Double)
---------------------	---

Example 4 - Triple course option

T Level Health - Support the Adult Nursing Team

OPEN EVENTS

Wednesday 2nd October
Wednesday 6th November
Saturday 30th November
Saturday 1st February



FIND OUT MORE

COURSE ENTRY CRITERIA

Depending on your course choices, you'll require slightly different grades.

We'll help you choose the best courses for you, your next steps, and advise on the grades you'll need all the way along.

Level 2

4 GCSEs or equivalents at grade 3 or above, including English Language at grade 3 with the exception of maths at grade 2 or above.

Level 3

A Level Programme

5 academic GCSEs, a minimum of 3 x grade 5s and 2 x grade 4s, these should include English Language and Maths.

Vocational Programme (BTEC/CTEC/Diploma/T Level)

5 GCSEs at grade 4 or above. These should include English Language, plus GCSE Maths at grade 3 or above.

Check out our course entry requirements, as some of our courses require specific grades.



COURSE
REQUIREMENTS



HOW TO APPLY

Applying to study at Franklin is **quick and easy!**



For more information about how to apply, call us on **01472 875000** or email Franklin at admissions@franklin.ac.uk



APPLY NOW

STARTING AT FRANKLIN

We understand moving from school to College is a big change, but you can be sure we are here to help every step of the way.

After applying to Franklin, we'll keep in touch and you'll hear from us regularly about your next steps.

TASTER DAY

Join us after your GCSEs and find out what life is like as a Franklin student. You'll have the chance to try each of your first-choice courses, experience Franklin, our fantastic facilities, meet our staff, and sample our tasty food with a free lunch. You'll also be assigned bridging work to introduce you to your chosen subjects, which you'll complete before enrolling.

ENROLMENT

Enrolment will be after you receive your GCSE results. Your enrolment appointment is where we'll confirm your place and Study Programme. If you don't achieve the grades you'd hoped for, don't panic! We can work with you to offer an alternative programme and support you on your journey to your dream career.

Psst, don't forget to bring along your completed bridging work to enrolment.



**Welcome to
life @Franklin!**

FRANK FEST

Frank Fest is our one-day, open-air event offering you a great start to the academic year. It's a friendly, fun, and relaxed welcome to Franklin. You'll experience our free street food market, live music, and take part in fun activities such as archery, assault course and much more. It's a fantastic opportunity to make new friends and meet our friendly staff. If you need a breather from all the fun, there are chilled, quiet areas, and you can even spend time with our adorable Therapy Dogs. Best of all, it's completely FREE!

ORIENTATION DAY

The term begins with an induction to your programme and college life. We will support you during your start with us to ensure you're as settled and supported as possible.

FIRST DAY OF TIMETABLED LESSONS

After your Preparing for Franklin Programme, you'll start your Study Programme. We'll support you to access your timetable on your Student Portal before your first day so you can plan your route to College and familiarise yourself with how to get around.

If you have any worries, require additional support, or want to know more about how we can help you, please email admissions@franklin.ac.uk

CREATE YOUR PERFECT STUDY PROGRAMME...

ANCIENT HISTORY, HISTORY, GOVERNMENT AND POLITICS,
GEOGRAPHY AND PHILOSOPHY AND ETHICS

30

ART, DESIGN AND FASHION

36

BUSINESS, FINANCE,
ECONOMICS AND TRAVEL

42

ENGLISH AND MODERN
FOREIGN LANGUAGES

50

HEALTH, SOCIAL, EDUCATION AND EARLY YEARS

56

IT, COMPUTING AND ESPORTS

60

MEDIA AND FILM

66

PERFORMING ARTS, DRAMA, MUSIC AND DANCE

70

PSYCHOLOGY, SOCIOLOGY,
CRIMINOLOGY AND LAW

76

SCIENCE, MATHS AND ENGINEERING

84

SPORT AND PUBLIC SERVICES

92



ANCIENT HISTORY, HISTORY,
GOVERNMENT AND POLITICS,
GEOGRAPHY, PHILOSOPHY
AND ETHICS

LATEST COURSE INFO



SKILLS

Digital skills

Research

Examination

Handling complex
information

Presentation skills

Oral communication skills

Debate skills

Interpersonal skills

Critical analysis

Key literacy skills

Critical thinking

Analytical skills

Teamwork

Scientific reasoning

COURSES

ANCIENT
HISTORY
A Level

Level:
3

Programme:
Single

Duration:
2 Years

Assessment:
100% Examination

If you have a passion for all things ancient, this is the course for you. Gain a thorough understanding of some of the ancient world's most intriguing eras as you develop key analytical and debating skills.

What will I learn?

During A level Ancient History, you'll explore the fascinating politics and society of Athens (460 - 399BC), the collapse of Rome's Late Republic (88 - 31BC), the Persian and Peloponnesian Wars (491 - 404BC), and the Julio-Claudian Emperors (31BC - 68AD). Bring the classical world to life with an unforgettable trip to either Rome or Athens and develop your skills through Personal and Professional Development programmes like Debate Club.

Possible career paths

- Archaeologist
- Archivist
- Curator
- Heritage Manager
- Educator Journalist
- Civil Servant
- Lawyer / Solicitor
- PR Professional
- Business Manager

Complementary courses

- History
- Government & Politics
- English Language / Literature
- Philosophy and Ethics
- Law / Applied Law
- Geography
- STEM subjects

Which Personal and Professional Development Programmes would benefit me if i took this course?

- Debate Club
- Environmental Champions
- Journalism Club
- Mock Trial

100% pass rate and positive destinations for all students who studied A Level Ancient History

HISTORY
A Level

Level:
3

Programme:
Single

Duration:
2 Years

Assessment:
Combination of coursework and examination

Explore the fascinating world of modern history and study the importance of civil rights and democracy for the working classes, as well as the impact of dictatorships and their tyranny on ordinary people. Make sense of the present by exploring the past and earn a versatile qualification in the process.

75% of students studying our A Level History course go on to further their studies at university

What will I learn?

As an A level History student, you will investigate the complexities of Communist Russia and the People's Republic of China (1949 to 1976). You'll also explore British history with a key focus on protest, agitation, and reform from 1780 to 1928, while coursework will focus on the abolishment of the slave trade in Britain. You'll also have the opportunity to take part in overseas trips to Athens or Rome, as well as getting to know British history better with a visit to the Pankhurst Centre in Manchester. As part of your studies, you'll also experience university lectures, seminars, and workshops at the University of Hull's acclaimed Wilberforce Institute for the Study of Slavery and Emancipation.

Possible career paths

- Archaeologist
- Archivist
- Curator
- Heritage Manager
- Educator
- Journalist
- Civil Servant
- Lawyer / Solicitor
- PR Professional
- Business Manager

Complementary courses

- Ancient History
- Government & Politics
- English Language / Literature
- Criminology
- Law / Applied Law
- Geography
- Philosophy and Ethics
- STEM subjects

Which Personal and Professional Development Programmes would benefit me if I took this course?

- Debate Club
- Environmental Champions
- Mock Trial
- Lessons from Auschwitz

GOVERNMENT & POLITICS
A Level

Level:
3

Programme:
Single

Duration:
2 Years

Assessment:
100% Examination

Develop your critical thinking skills as you explore multiple perspectives in complex arguments, while nurturing a comprehensive understanding of both the British and global political systems. A fascinating course where genuine free speech is welcomed, and evidence-based views are always encouraged.

What will I learn?

Studying A Level Government & Politics will provide you with an understanding of British politics, exploring pressure groups, devolution, voting systems, and much more. Go further and discover the forces of globalisation and influential bodies such as the UN, NATO, and the IMF. You'll also get to grips with a variety of differing ideologies, from anarchism to conservatism and everything in between. As well as hearing from inspiring guest speakers and getting stuck into debates, you'll take your studies beyond the classroom to visit the University of Hull, Parliament, and the Supreme Court in London.

Possible career paths

- Politician
- Civil Servant
- Internal Relations Specialist
- Marketing / Communications / PR Professional
- HR Professional
- Research Fellow
- Police Officer

Complementary courses

- History / Ancient History
- English Literature / Language
- Sociology
- Philosophy and Ethics
- Law
- STEM subjects

Which Personal and Professional Development Programmes would benefit me if I took this course?

- Sustainability Club
- Debate Club



GEOGRAPHY

A Level

Level:

3

Programme:

Single

Duration:

2 Years

Assessment:

100% Examination

If you want to experience the world around you, develop an understanding of the world's people, places and environments and discover more about how and why things happen, then studying A Level Geography is the perfect course for you!

What will I learn?

Throughout this course, you'll combine physical and human geography to understand what makes things happen across the UK and on a global scale. Key course topics include tectonic plates and coasts, globalisation and regeneration, water and carbon cycles, superpowers, migration, and identity. You'll develop research skills and have the chance to complete an independent investigation in an area that fascinates you during the second year. As part of your course, you'll have the chance to step outside the classroom and take part in a range of trips, visits, and experiences in the field.

100%

of students studying A Level Geography with us progressed to positive destinations

Possible career paths

- Environmental Consultant
- Disaster Risk Management
- Cartographer
- Town Planner
- Global Trade Programme Manager
- Social Researcher
- Sustainability Consultant
- Transport Planner
- Conservationist
- Solicitor
- Teacher
- Political Correspondent
- Surveyor
- Marketing Executive

Complementary courses

- Maths
- Applied Science
- History / Ancient History
- Law
- Business
- Economics
- Travel & Tourism

Which Personal and Professional Development Programmes would benefit me if I took this course?

- Environmental Champions
- Mountaineering
- Duke of Edinburgh Award
- Logistics / Business Career Academy

PHILOSOPHY AND ETHICS

A Level

Level:

3

Programme:

Single

Duration:

2 Years

Assessment:

100% Examination

If you have ever wondered why we are here, whether there is a God, why there is so much suffering in the world, or why we make the decisions we do every day, then this is the course for you! Best of all, universities and employers agree that this course proves an excellent preparation for the future, giving you the skills you need to achieve your goals.

What will I learn?

Throughout this fascinating course, you'll get the chance to delve into some of the knottier problems of human existence, tackle the work of some of the world's greatest thinkers, and seek to answer some of the biggest ethical questions about life, ranging from what we mean by good and evil, all the way through to exploring challenging issues such as euthanasia and sexual ethics. You'll build an understanding of religious, non-religious and sometimes competing world views, whilst learning to argue and sharpen your analytical skills.

Philosophy and Ethics will make you think, it will open your mind, and you may never see the world in quite the same way again!

Possible career paths

Complementary courses

- Lawyer
 - Journalist
 - Politician
 - Researcher
 - Economist
 - Doctor
 - HR Officer
 - Teacher
 - Project Manager
 - Business Consultant
 - Social Worker
- History / Ancient History
 - Government & Politics
 - English Literature
 - Law
 - Economics/ Business
 - Sociology / Psychology

Which Personal and Professional Development Programmes would benefit me if I took this course?

- Debate club
- Lessons from Auschwitz
- Career Academies
- Franklin High Flyers
- Student Union

100%

pass rate for all students studying Ancient History, History, Government & Politics, and Geography



ART, DESIGN AND FASHION

LATEST COURSE INFO



SKILLS

Creative intuition

Investigative &
analytical skills

Aesthetic understanding

Critical judgment

Independence

Versatility

Adaptability

Productivity

Critical thinking

The business of art

Digital skills

COURSES

FINE ART

A Level

Level: 3	Programme: Single
Duration: 2 Years	Assessment: Combination of coursework and examination

If you're a creative person with a passion for exploring ideas and imaginatively developing your own visual arts projects, then this is the course for you. Be adventurous as you respond to historic and contemporary art. Grow and develop the skills, understanding, and confidence you need to nurture your dream career in the arts.

100% Pass rate for students studying Fine Art

What will I learn?

Studying A Level Fine Art promises studio-based learning with supportive and critical guidance to help you flourish as an artist. You'll be immersed in workshops in drawing, painting, sculpture, printmaking, and new and emerging media to develop and grow your skills and understanding. You'll develop personal thematic projects and have plenty of opportunities to showcase your work. You'll also be able to engage in a rich variety of industry talks and workshops as well as trips, visits and residentials in St Ives, Amsterdam, Paris, and London.

Possible career paths

- Fine Artist
- Curator
- Art Educator / Lecturer
- Technical Artist
- Art Therapist
- Ceramicist
- Creative Director
- Costume / Set Designer
- Illustrator
- Interior Design
- Make Up Artist
- Community Arts worker
- Product Design
- Animator

Complementary courses

- Fashion & Textiles
- Photography
- Graphics

Which Personal and Professional Development Programmes would benefit me if I took this course?

- Artist Collective

Students enjoy regular trips and visits to museums and art galleries, including overseas trips to Amsterdam and Paris

ART, MEDIA & DESIGN

Foundation Diploma

Level: 3/4	Programme: Triple
Duration: 1 Year	Assessment: 100% Portfolio

If you're interested in joining one of the country's most prestigious art and design courses, this Foundation Diploma is for you. The course gives you the opportunity to build on knowledge and skills nurtured at Level 3 as you explore your creative vision and learn how to operate as a professional artist or designer, which will help you as you move forward in your career.

What will I learn?

This amazing full-time Foundation Diploma is divided into three key stages. In the Exploratory Stage, you'll take part in creative skills workshops and challenges, attend artist talks, galleries, and view artwork made on location. During the Pathways Stage, you will explore specialist project briefs and critical reviews, whilst also receiving portfolio support and UCAS guidance. You'll also have the chance to undertake a residential in Amsterdam. The last stage is your Final Major Project, which results in a public exhibition of your work.

Possible career paths

- | | |
|---------------------|----------------------------|
| • Artist | • Film & TV Producer |
| • Architect | • Graphic / Product Design |
| • Interior Designer | • Photographer |
| • Curator | • Technical Artist |
| • Arts Educator | • Set Designer |
| • Art Therapist | • Animator |
| • Creative Director | • Costume Designer |
| • Fashion Designer | |

Complementary courses:

- This is a post A Level qualification which occupies a full-time programme

Which Personal and Professional Development Programmes would benefit me if I took this course:

- Makers Market
- Artist Collective
- Trips
- Photography Club
- Character Design Club
- Graphics

GRAPHICS

A Level

Level: 3	Programme: Single
Duration: 2 Years	Assessment: Combination of coursework and examination

Are you a creative thinker and image maker with a desire to communicate visually? Then Graphics is the course for you. You'll be able to experiment with various techniques, including drawing, printmaking, typography, and photography and develop the skills you need to secure an exciting future in illustration, advertising, packaging design, or multimedia.

What will I learn?

On this fascinating A Level course, you'll learn in a variety of extraordinary environments, from our high-spec Mac Suite to our traditional print and design studio. You'll tackle design problems through creative projects and gain industry experience through real-life briefs. You'll use a wide range of graphics approaches to develop essential industry skills to tackle design problems through creative projects and gain industry experience by responding to real life briefs. You'll also nurture a variety of skills to develop essential industry skills in infographics, product design, branding, and multimedia design. Hear from guest speakers, participate in trips and visits, and showcase your work.

Graphics students have gone on to a range of creative degrees at university - including TV & Radio Production, Film Production, Graphic Design, Architecture, Photography and more!



Possible career paths

- Graphic Designer
- Creative Director
- Illustrator
- Production Artist
- Product Developer
- Art Director
- Marketing Specialist
- Multimedia Artist / Animator
- Digital Film & TV Production

Complementary courses

- Fine Art
- Fashion & Textiles
- Photography
- Digital Games Design
- Digital Film & TV Production

Which Personal and Professional Development Programmes would benefit me if I took this course?

- Artist Collective
- Photography Club
- Character Design Club
- Graphics

100% Pass rate for students studying Graphics

FASHION & TEXTILES

A Level

Level: 3	Programme: Single
Duration: 2 Years	Assessment: Combination of coursework and examination

If you have a passion for materials and construction, then Fashion & Textiles is the course for you. Discover the art of stitching, assembling, printing, and designing and carve out your chosen career in the exciting fashion and textiles industry.

What will I learn?

As not all Fashion & Textiles students have studied Fashion and Textiles at GCSE, the course introduces core skills. You'll explore stitch, print, pattern, garment construction, 3D construction, needle felting, and fashion illustration, along with undertaking personal thematic fashion and textile projects in a supportive studio environment. You'll also showcase your work at fashion shows and have the chance to take part in trips and visits to exhibitions. The course regularly brings in guest speakers, including Our Big Picture, Stylist Emily Jones, and film director Jack Spring, to name a few. Prior study of an art-based course at GCSE is required, or you can provide a portfolio of creative work.

Possible career paths

- Fashion / Textile Designer
- Garment Technologist
- Fashion Illustrator
- Pattern Cutter / Grader
- Personal Stylist / Shopper
- Fashion Buyer

Complementary courses

- Graphics
- Fine Art
- Photography

Which Personal and Professional Development Programmes would benefit me if I took this course?

- Artist Collective
- Film
- Thrift
- Photography Club



PHOTOGRAPHY

A Level

Level: 3	Programme: Single
Duration: 2 Years	Assessment: Combination of coursework and examination

"Photography is by nature a documentary art," stated acclaimed portrait photographer August Sander, and this course will offer you a treasure trove of opportunities to document your world through a camera lens. Develop your personal creative vision through a technical and experimental approach to this ever-vital art form.

PHOTOGRAPHY

CTEC

Level: 3	Programme: Single
Duration: 2 Years	Assessment: 100% Coursework

What will I learn?

This exciting and versatile course will help you gain essential skills, from taking photos to processing techniques. You'll explore the various aspects of photography and develop your craft using our incredible 18-bay darkroom. Master digital photography and Photoshop in our state-of-the-art Mac Suite. Take inspiration from a host of photographers, ranging from the world of art to advertising, as you chart your course on personal thematic projects. Outside of the studio, the course offers you the chance to participate in location photoshoots, trips, and exhibitions, and you'll also have plenty of opportunities to showcase your work.

What will I learn?

Studying A-level Photography will help you develop camera skills and process and print film techniques in a darkroom. In our state-of-the-art Mac Suite, you will explore digital photography and build your skills in Photoshop and post-production display. You'll take inspiration from photographers such as Louis Daguerre, Diane Arbus, and everyone in between and look at the world of commercial and modern photography as you work on personal thematic projects. Our Photography Studio provides you with a wide variety of backdrops, lighting options, props, and resources to help you build your creativity. Outside of the studio, you'll take part in photoshoots on location, attend trips and exhibitions, and have opportunities to showcase your work both at College and in the local community.

Possible career paths

- Portrait Photographer
- Commercial Photographer
- Photojournalist
- Photo Editor
- Wedding Photographer
- Events Photographer
- Fine Art Photographer
- Marine Photographer
- Film Producer / Director

Complimentary courses

- Fashion & Textiles
- Graphics
- Fine Art
- Digital Film & TV Production

Which Personal and Professional Development Programmes would benefit me if I took this course?

- Artist Collective
- Photography Club

Develop your photography and photo editing skills and knowledge as you document the world around you and learn all you need to help make your chosen future a reality.

Possible career paths

- Portrait Photographer
- Commercial Photographer
- Photojournalist
- Photo Editor
- Wedding Photographer
- Events Photographer
- Fine Art Photographer
- Marine Photographer
- Film Producer / Director

Which Personal and Professional Development Programmes would benefit me if I took this course?

- Artist Collective
- Photography Club

Complementary courses

- Fashion & Textiles
- Graphics
- Fine Art
- Digital Film & TV Production





BUSINESS, FINANCE, ECONOMICS, AND TRAVEL

LATEST COURSE INFO



SKILLS

Communication

Teamwork

Problem solving

Time management

Data analysis

Entrepreneurship

Project management

Responding to
a client brief

Leadership skills

Interpersonal skills

COURSES

BUSINESS BTEC

Level: 2	Programme: Double
Duration: 1 Year	Assessment: Combination of coursework and examination

If you're looking to start your own business or want to gain a deeper understanding of how business works, this course will get you where you want to go.

BUSINESS BTEC

Level: 3	Programme: Single and Double
Duration: 2 Years	Assessment: Combination of coursework and examination

What will I learn?

Studying BTEC Business as a single option will complement any other course you choose, providing an excellent understanding of how businesses operate and how business is relevant to every area of life. Primary topics include developing a marketing campaign, personal and business finance, and understanding recruitment and selection processes. If you choose the double option, you'll progress further by learning core skills which can be used in managing your own business and people on a national and global scale. You'll also explore key subjects such as international business, principles of management, and pitching a business idea.

What will I learn?

Level 2 Business is a great way to take the first steps into the world of business. You'll study a range of topics such as customer service, team building, advertising, creating a website, and making money. You'll explore key areas of the business world including, promoting a brand and team building. Our team of enthusiastic and experienced staff have significant business knowledge between them, to guide and support you and share your love of the business world. This course is equivalent to 2 GCSEs and many of our students often progress onto Level 3 BTEC Business, before securing a job or a place at university.

Possible career paths

- Social Media
- Marketing
- HR
- Banking

Which Personal and Professional Development Programmes would benefit me if I took this course?

- Business / Logistics Career Academy
- Student Union

There are approximately 30,000 businesses in the Region providing over 447,000 jobs.

Togetherforall

Prepare yourself for the world of work with our in-depth and highly versatile Business course. Accelerate your personal and professional development through learning essential skills, including financial management, communication, presenting, and report writing.

Possible career paths

- Bank Manager
- Business Analyst
- Business Development Manager
- Business Project Manager
- Customer Services Manager
- Digital Marketer
- Financial Adviser
- HR Officer
- Investment Analyst
- Management Consultant
- Market Researcher
- Pensions Adviser
- Sales Manager
- Social Media Manager

Complementary courses

- Economics
- Financial Studies
- Travel & Tourism
- Law
- Sport
- English Language

Which Personal and Professional Development Programmes would benefit me if I took this course?

- Business / Logistics Career Academy
- Student Union
- Young Enterprise
- Debate Club

100% Pass rate for students studying Business courses

BUSINESS STUDIES A Level

Level: 3	Programme: Single
Duration: 2 Years	Assessment: 100% Examination

Are you intrigued by the world of business? Learn more about the complex and constantly evolving business landscape of business and develop the skills and insight you need to transform your aspirations into reality.

What will I learn?

As a student on this exciting course, you'll study four principal areas which, include: marketing and people management, finance and accounting, making long-term business decisions, and business on a global scale. Through studying real-life business case studies, you'll possess the relevant skills for a range of progression routes, including self-employment, university study, or the world of work.

Possible career paths

- Bank Manager
- Business Analyst
- Business Development Manager
- Business Project Manager
- Customer Services Manager
- Digital Marketer
- Financial Adviser
- HR Officer
- Investment Analyst
- Management Consultant
- Market Researcher
- Pensions Adviser
- Sales Manager
- Social Media Manager
- Entrepreneur

Complementary courses

- Economics
- Financial Studies
- Travel & Tourism
- Law
- Sport
- English Language

Which Personal and Professional Development Programmes would benefit me if I took this course?

- Business / Logistics Career Academy
- Student Union
- Young Enterprise
- Debate Club



ECONOMICS

A Level

Level:
3

Programme:
Single

Duration:
2 Years

Assessment:
100% Examination

Discover the dynamic and exciting world of economics! If you have a keen interest in current affairs and a head for numbers, this course is definitely for you!

100% pass rate for students studying A level Economics

What will I learn?

Studying A Level Economics will see you explore how external shocks and global events impact firms, consumers, and employees and how the government intervenes. As well as an introduction to markets and market failure, you'll explore an understanding of the UK economy, business behaviours and the labour market and examine economic matters from a global perspective. You'll take part in trips to London's Financial District, home to the headquarters of many banks and corporations, and visit universities and employers, all helping to develop your knowledge and insight into the many exciting careers in economics available to you.

Possible career paths

- Economist
- Chartered Accountant
- Investment Analyst
- Management Consultant
- Civil Servant
- Business Analyst
- Accountant

Complementary courses

- Government & Politics
- Finance
- Maths
- Business Studies
- Law

Which Personal and Professional Development Programmes would benefit me if I took this course?

- Business Career Academy
- Student Union
- Young Enterprise

Take part in visits from industry speakers and and university trips to build your skills, experience and development

TRAVEL & TOURISM

BTEC

Level:
2

Programme:
Double

Duration:
1 Year

Assessment:
Combination of coursework and examination

A perfect preparation if you want to pursue a career in the rich and rewarding world of travel and tourism. Whether you dream of travelling closer to home or want to venture to exotic destinations, a future in this industry can be extremely exciting. In this course, you will gain essential industry knowledge and develop the skills you'll need to be successful in your chosen career.

What will I learn?

During this course, you'll concentrate on working towards upskilling and gaining the knowledge that will help you pave the way to a variety of careers, from the airline and hospitality industry to tourist attractions, event organisation, and beyond. Explore the factors impacting tourism, investigate global travel destinations, and create marketing campaigns for travel brands. Gain a deeper understanding of dark tourism, which includes the opportunity to visit Auschwitz. Expand your studies outside of the classroom with inspiring visits to places such as Alton Towers, York Christmas Market and Winter Wonderland. At Level 2, you'll study Travel & Tourism alongside GCSE English and/or GCSE Maths. After successfully completing Level 2 and your GCSEs, you could study the Level 3 course alongside Business Studies, Economics, Sociology, Digital Film & TV Production, and more.

Which Personal and Professional Development Programmes would benefit me if I took this course?

- Mountaineering Club
- Lessons from Auschwitz

Excellent progression rates for Level 2 Travel & Tourism students moving onto higher levels of study

TRAVEL & TOURISM

BTEC

Level:
3

Programme:
Single

Duration:
2 Years

Assessment:
Combination of coursework and examination

What will I learn?

Explore the UK, European, and global tourism industries by studying Travel & Tourism at Level 3. You'll look at locations such as London, New York, and Dubai, to name just a few, while gaining a further understanding of the importance of customer service. Examine the marketing required for travel and tourism relating to global destinations and discover more about your favourite British visitor attractions and the global destinations you've always wanted to visit or revisit. You'll also investigate the complexities of dark tourism, which includes a visit to Auschwitz. Step out of the classroom with opportunities to attend inspiring places, including Alton Towers, York Christmas Market and Winter Wonderland.

Possible career paths

- Tour Guide
- Travel Agent
- Holiday Representative
- Flight Attendant
- Tour Operator
- Events Planner / Manager
- Tourist Information Officer
- Travel Consultant
- Hotel Manager
- Marketing Assistant / Manager
- PR Assistant / Manager

Complementary courses

- Business Studies
- Economics
- Digital Film & TV Production
- Sociology

Which Personal and Professional Development Programmes would benefit me if I took this course?

- Mountaineering Club
- Lessons from Auschwitz

MANAGEMENT & ADMINISTRATION

T Level

Level: 3	Programme: Triple
Duration: 2 Years	Assessment: Combination of coursework and examination

If you're looking for an in-depth understanding of management structures and administrative processes, this is the course for you. Combining classroom study and hundreds of hours of work experience, T Level Management & Administration is your pathway to business success.

What will I learn?

This innovative T-Level will see you divide your time between the classroom and the workplace as you apply the theory you learn to real-life settings. You'll develop knowledge and skills across core areas of business, management, and administration, including project and change management, business behaviours, communication types, and examining leadership and management. That's not all, you'll study the importance of recruitment and selection, motivation theory, equality and diversity, and organisation culture, values and objectives and strategies and managing finances. In addition, you'll hear from guest speakers and undertake Personal and Professional Development opportunities, which will enhance your skills and knowledge further.

Possible career paths

- Actuarial Analyst
- Arbitrator
- Business Adviser / Analyst
- Business Development Manager
- Data Analyst / Scientist
- Forensic Accountant
- Insurance Underwriter
- Management Consultant
- Project Manager
- Risk Manager
- Supply Chain Manager

Which Personal and Professional Development Programmes would benefit me if I took this course?

- Business Career Academy
- Debate Club
- Student Union
- Young Enterprise / Franklin 500

Take part in at least 45 days of industry work experience

FINANCE (INVESTMENT BANKING, ASSET & WEALTH MANAGEMENT)

T Level

Level: 3	Programme: Triple
Duration: 2 Years	Assessment: Combination examination and occupational specialism assessment

Unlock your financial future with our Finance T Level! With a 315-hour industry placement in Asset & Wealth Management, you'll apply the theory you learn in the classroom with real-world experience. Explore an exciting range of subjects, from mastering financial accounting to embracing cutting-edge technology and ethics. Investigate diverse career avenues while developing a firm foundation in financial services, security, and risk.

What will I learn?

Developed in partnership with employers, this T Level course is the equivalent of three A Levels and covers a range of fascinating topics, alongside your industry placement. During your studies, you will build your knowledge across a variety of subjects, including the business environment, careers in finance and accounting, regulation, professionalism and ethics/equality, diversity and inclusion, security and risk, professional services, fundamentals of law, fundamentals of financial accounting, technology, data-driven innovation/analytics and design thinking, research skills, project/change management and administration and the financial services sector. This course will give you a head start in a fast-paced and rapidly growing competitive industry.

Possible career paths

- Retail and Commercial Banking Analyst
- Investment Banking and Asset and Wealth Management Analyst
- Insurance Practitioner
- Financial Compliance / Risk Analyst

Which Personal and Professional Development Programmes would benefit me if I took this course?

- Business Career Academy
- Student Union
- Young Enterprise / Franklin 500



ENGLISH AND MODERN FOREIGN LANGUAGES

LATEST COURSE INFO



SKILLS

Communication

Critical reasoning
and analysis

Independent working

Planning and researching

Effectively conveying
arguments

Creative thinking

Presentation skills

Time management
and organisation

Interpersonal skills

Research and
analytical skills

Organisational skills

COURSES

ENGLISH LANGUAGE GCSE

Level:
2

Programme:
Single

Duration:
1 Year

Assessment:
100% Examination

If you're looking for a fresh approach with supportive staff, this is the course for you. GCSE English will set you on the right path to your chosen future.

What will I learn?

Studying GCSE English Language at Franklin gives you the best possible opportunity to progress and gain confidence in the subject. We consistently score much higher than the national average for students improving their entry grade and going on to achieve the national pass of grade 4 or above. The course will see you explore a range of fascinating topics, develop your creative writing skills, and build strategies to succeed in the exams and beyond. Pair with any Level 2 subject to boost your skills and qualifications to access a Level 3 programme.

Which Personal and Professional Development Programmes would benefit me if I took this course?

- Creative Writing Club
- Book Club
- Student Union

98% of students studying GCSE English Language progressed to positive destinations

ENGLISH LANGUAGE A Level

Level:
3

Programme:
Single

Duration:
2 Years

Assessment:
Combination of coursework and examination

What will I learn?

When studying this eye-opening course, you'll explore the impact of social media and technology on language in the present and go back to 950AD to track changes in the attitudes and values of society. Learn how people use language to control and influence others and find out why the 'Forbidden Experiment' impacts our understanding of child language acquisition. You'll also practise being a professional writer as you learn how to respond to a brief. Step out of the classroom with visits to London, university lectures, and virtual talks from David Crystal, the world's leading linguistic expert.

Question the society we live in through the lens of English Language, all the while building skills highly sought after in a range of different sectors. Exploring the importance of language allows you to understand the past, present, and our changing future, covering everything from history to current affairs.

Possible career paths

- Editor
- Journalist
- News Reporter
- Writer / Copywriter / Blogger / PR Professional
- Web Content Manager
- Media Researcher
- Translator
- Social Media Manager
- Linguist
- Publisher
- Speech and Language Therapist
- Teacher
- Marketing Executive

Complementary courses

- Sociology
- Law
- Psychology
- Media
- Business / Business Studies
- History
- Government & Politics
- French
- Spanish
- Philosophy and Ethics

Which Personal and Professional Development Programmes would benefit me if I took this course?

- Debate Club
- Creative Writing Club
- Journalism Club
- Book Club
- Teaching / Law / Business Career Academy
- Journaling Workshop



ENGLISH LITERATURE A Level

Level:
3

Programme:
Single

Duration:
2 Years

Assessment:
Combination of coursework and examination

Are you passionate about reading and like to debate ideas? English Literature is the perfect course for you. Explore how society and culture have changed, discuss controversial topics, and investigate how writers portray the world we live in.

What will I learn?

A Level English Literature will see you study murder and manipulation with Othello, explore the impact of childhood experiences and prejudice in The Color Purple and Hard Times, and see the world through a poet's eyes. You're also free to select your own texts to study for coursework. To further immerse you in the world of literature, you'll take part in live-stream events alongside trips to the theatre, London, and the Lake District. You'll experience university lectures and workshops with visiting lecturers. You could also enhance your skills by joining our successful Debate Club, where you can participate in weekly topical debates and competitions.

100% positive destinations for our A level English Literature course

Possible career paths

- Paralegal
- Journalist
- Media Researcher
- Marketing Executive
- Teacher
- Editor
- PR Officer
- Writer / Copywriter
- Social Media Manager
- Web Content Manager

Complementary courses

- History
- Ancient History
- Government & Politics
- Psychology
- Law
- Film Studies
- Philosophy and Ethics

Which Personal and Professional Development Programmes would benefit me if I took this course?

- Debate Club
- Creative Writing Club
- Book Club
- Journalism Club
- Teaching Academy
- Law / Business Career Academy
- Journaling Workshop

Studying Modern Foreign Languages will prepare you for accessing many courses at Russell Group universities, including the University of Oxford

FRENCH A Level

Level: 3
Programme: Single
Duration: 2 Years
Assessment: 100% Examination

What will I learn?

Studying A Level French will allow you to explore the country's education system and workplaces, engage with contemporary music and media, examine French political culture, and investigate historical events linked to WWII. French is a subject that requires a lot of speaking, so you'll get lots of individual speaking practice to develop your proficiency and confidence. You'll be provided with lots of reading, listening, and skills support in extra timetabled sessions. You may also get the opportunity to pick up another foreign language – such as Portuguese or Italian – and participate in a nationwide foreign writing competition.

Possible career paths

- Interpreter
- Diplomat
- Journalist
- Flight Attendant
- Doctor
- Investment Bankers
- International Lawyer
- Social Media Manager
- Military Intelligence
- Export Manager
- Politician

Complementary courses

- English Language / Literature
- History / Ancient History
- Government & Politics
- Business / Business Studies
- Law
- Sociology
- Film Studies
- Philosophy and Ethics

Which Personal and Professional Development Programmes would benefit me if I took this course?

- Debate Club
- EPQ
- Teaching Academy
- Business / Law Career Academy
- Journaling Workshop

Calling anyone with a keen interest in other countries and cultures, or a desire to engage in international business or travel. Gain the tools needed to manipulate your language, justify your opinions, and build excellent communication skills - all whilst exploring French history and culture.

SPANISH A Level

Level: 3
Programme: Single
Duration: 2 Years
Assessment: 100% Examination

What will I learn?

Spanish is a subject that requires a lot of speaking, so you'll get plenty of individual speaking practice to develop your proficiency and confidence. Don't worry, you'll be provided with plenty of reading, listening, and skills support. As part of the course, you'll study a Spanish language film and read the novel *Like Water for Chocolate*. You'll also dive into the culture and practices of the Spanish speaking world, examine multiculturalism in Spain, and investigate the effects of the Spanish Civil War. A modern foreign language qualification opens a wide variety of opportunities and will make you a more attractive candidate whether you progress into higher education or employment.

Possible career paths

- Translator
- International Relations Manager
- Social Media Manager
- Hospitality Manager
- Teacher
- Immigration Attorney
- Travel Specialist
- International Lawyer
- Engineer in Energy Sector
- M15 Language Specialist
- Social Worker

Complementary courses

- English Language / Literature
- History / Ancient History
- Government & Politics
- Business / Business Studies
- Law
- Sociology
- Film Studies
- Philosophy and Ethics

Which Personal and Professional Development Programmes would benefit me if I took this course?

- Debate Club
- EPQ
- Teaching Academy
- Business / Law Career Academy

Spanish is the world's second-most spoken native language after Mandarin Chinese

100% of students studying Modern Foreign Languages with us progressed to positive destinations

SKILLS

Teamwork

Written and verbal
communication skills

Independent working

Reflective practice

Problem solving

Research skills

Adaptability

Empathy

Confidence

Resilience

Critical Analysis

Applications of
Knowledge

Professionalism



HEALTH, SOCIAL,
EDUCATION AND
EARLY YEARS

LATEST COURSE INFO



COURSES

HEALTH & SOCIAL CARE CTEC

Level: 2	Programme: Double
Duration: 1 Year	Assessment: 100% Coursework

Develop your knowledge and understanding of the Health & Social Care sector and gain essential industry skills whilst retaking one or two of your GCSE qualifications. This course is an excellent foundation for progression onto our Level 3 Health & Social Care course.

What will I learn?

Studying Health & Social Care at Level 2 will introduce you to the structure and function of the body, the range of services the industry offers, giving you an insight into the essential employability skills required to work within it, and look at the importance of supporting individual rights for those in health, social care, and early years settings. You'll also explore verbal and non-verbal communication and specialist methods such as British Sign Language, Makaton and Braille. Step out of the classroom with an exciting work placement where you can choose from a variety of different settings. Throughout the course, you'll develop self-confidence and academic study skills, supporting you with further progression, such as moving onto Level 3.

Which Personal and Professional Development Programmes would benefit me if I took this course?

- Health & Social Care Career Academy
- Allied Health Academy
- Social Work Academy
- British Sign Language

100% pass rate for students studying Health & Social Care

HEALTH & SOCIAL CARE CTEC

Level: 3	Programme: Single, Double or Triple
Duration: 2 Years	Assessment: Combination of coursework and examination

Develop the knowledge, skills, and understanding you'll need to work in health and social care services. With knowledgeable staff and industry speakers, this comprehensive course offers a holistic learning experience, equipping you with valuable knowledge and practical skills for future progression to further study or employment.

What will I learn?

This course is a perfect choice if you want a career in the health and social care industry. You'll explore a range of exciting subject areas, such as person-centred approaches, public health strategies, infection control, and anatomy and physiology, among others. Our double and triple course options provide more detail and insight, covering additional subjects such as safeguarding vulnerable individuals, long-term physiological conditions, mental health conditions, learning disabilities, promoting positive behaviour, research methods and supporting people with dementia.

Possible career paths

- Adult Nurse
- Paediatric Nurse
- Midwife
- Social Worker
- Teacher
- Paramedic
- Occupational Therapist
- Physiotherapist
- Operating Department Practitioner
- Support Worker
- Carer
- Mental Health Nurse

Complementary courses

- Applied Human Biology
- Applied Science
- Sociology
- Psychology
- English Language

Which Personal and Professional Development Programmes would benefit me if I took this course?

- Health & Social Care Career Academy
- Allied Health Professionals
- Social Work Academy
- British Sign Language



EDUCATION & EARLY YEARS T Level

Level: 3	Programme: Triple
Duration: 2 Years	Assessment: Controlled assessment and examinations

As a student on the T Level in Education & Early Years course, you'll spend three days a week learning from our fantastic Education and Early Years team and the remaining two days will be spent on placement in an early years setting and a primary school setting, giving you invaluable work experience and insight into your chosen industry as you put what you learn in the classroom into practice.

What will I learn?

This innovative T Level course will expand your knowledge and understanding in a range of subjects, including child behaviour and language acquisition, how a child develops, the role in which the family and support agencies work in relation to a child, safeguarding and special educational needs. You'll also focus on becoming a reflective practitioner, which is crucial when working in education and early years. As part of studying this T Level, you'll also complete an Supplementary Paediatric First Aid course, so you're ready to work in the childcare industry as soon as you graduate.

Possible career paths

- Nursery Worker
- Nursery Manager
- Play Worker
- Childminder
- Early Years Practitioner
- Early Years Educator
- Support Worker / Assistant
- Primary School Teacher

Which Personal and Professional Development Programmes would benefit me if I took this course?

- Social Work Academy
- Mindfulness & Meditation
- Sustainability
- British Sign Language

You'll take part in 750 placement hours in an early years setting

HEALTH (SUPPORTING THE ADULT NURSING TEAM) T Level

Level: 3	Programme: Triple
Duration: 2 Years	Assessment: Practical assessment, controlled assessment and examinations

The T-Level for Health (Supporting The Adult Nursing Team) offers a combination of classroom learning and hands-on experience through an industry placement of 315 hours throughout a course. With 80% of your time in the classroom and 20% at placement with an employer, you'll develop the essential knowledge, skills, and behaviours required for a successful career in Nursing.

What will I learn?

In the first year of this comprehensive course, you'll study core health and science modules, equipping you with a solid foundation for working in the Health & Science sector. You will explore topics including epidemiology, health, safety, and environmental considerations, managing information and data, and an in-depth exploration of various body systems, (reproductive and cardiovascular systems), among others. Gain insights into scientific and clinical practice, person-centred care, infection prevention and control, safeguarding, and immunology. During Year 2, you'll undertake three assignments designed to showcase your practical skills, which, are tailored to your chosen occupational specialism. At the core of your occupational specialisation, you'll focus on supporting the adult nursing team, building your knowledge and expertise in this critical area.

Possible career paths

- Nurse
- Health Assistant
- Healthcare Worker
- Community Health Worker
- Emergency Care Assistant
- Plus, many more Health & Social Care related career paths

Which Personal and Professional Development Programmes would benefit me if I took this course?

- Health & Social Care Career Academy
- Allied Health Academy
- Social Work Academy
- British Sign Language



IT, COMPUTING AND ESPORTS

LATEST COURSE INFO



SKILLS

**Communication,
teamwork, and coaching**

Critical evaluation

Analytical thinking

Research

Presentation

Independent learning

Creative design

**Verbal and written
communication**

Digital technology skills

Problem solving

Creative thinking

Working to a client brief

Planning

Logical reasoning

Problem decomposition

Project management

COURSES

CREATIVE COMPUTING CTEC

Level: 2	Programme: Double
Duration: 1 Year	Assessment: 100% Coursework

Experience the impact of IT in everyday life. Explore a wide variety of topics and career opportunities available in the industry and gain the skills and knowledge you need to succeed in the exciting world of Creative Computing.

What will I learn?

Studying Creative Computing at Level 2 will give you the fundamentals in website design, graphics and presentation, and multimedia. You'll also examine the job opportunities available across the IT industry. As part of this course, you'll design and publish a website and discover more about graphics, animation, video, and various media. After studying Level 2 Creative Computing, you can look forward to progressing onto the Level 3 course, Digital Games Design or Esports.

Which Personal and Professional Development Programmes would benefit me if I took this course?

- Esports Teams
- Character Design Club

95% high grades for students studying Creative Computing at Level 2

CREATIVE COMPUTING CTEC

Level: 3	Programme: Single
Duration: 2 Years	Assessment: Combination of coursework and examination.

If you're looking to explore an increasingly technological world and how the use of apps and computers for business is rapidly advancing, this course is the one for you! Develop core computing skills that will make you an asset in whatever field you choose to enter.

What will I learn?

Studying Creative Computing at Level 3 will empower you to analyse the relationship between business and computing – from social media and website design to fighting cybercrime. You'll design a website to meet a client brief, analyse a client's needs, and design and build a mobile phone app. You'll also dive into thought-provoking topics such as the ethical use of computers, global information exploration, web design, and app development.

Possible career paths

- IT Technician
- Web Developer
- Data Manager
- App Developer

Complementary courses

- Digital Film & TV Production
- Digital Games Design
- Esports
- Computer Science

Which Personal and Professional Development Programmes would benefit me if I took this course?

- Esports Teams
- Character Design Club
- Creative Writing Club
- Dungeons & Dragons
- Online Gaming Sessions & Geoguessr

COMPUTER SCIENCE A Level

Level: 3	Programme: Single
Duration: 2 Years	Assessment: Combination of coursework and examination

Discover more about the importance of Computer Science and the critical role it plays to modern tech. Gain a thorough understanding of the theory, alongside developing valuable skills in programming and development, with the opportunity to develop your own programming project.

What will I learn?

Studying Computer Science will teach you the skills to code computers using the C# programming language and learn more about the vital maths involved in computing. You'll cover a diverse range of topics exploring how processors work, logic circuits, and structured query language, as well as networking, big data, encryption, and much, much more. Key course topics also include data representation and machine architecture.

Possible career paths

- Application Analyst
- Cyber Security Analyst
- Data Analyst
- Database Administrator
- Forensic Computer Analyst
- Games Designer
- Gameplay Developer
- Information Systems Manager
- IT Consultant
- Software Engineer
- Systems Analyst
- Web Designer / Developer
- Network Engineer

Complementary courses

- Maths
- Further Maths

Which Personal and Professional Development Programmes would benefit me if I took this course?

- Highflyers
- Maths Challenge
- Esports Teams
- Character Design Club

100% positive destinations for students studying Computer Science

DIGITAL
GAMES DESIGN
BTEC

Level:
3

Programme:
Double

Duration:
2 Years

Assessment:
Combination of coursework
and examination

What will I learn?

Digital Games Design will introduce you to the creative and technical aspects of digital games production. You'll develop skills in key areas such as concept art, 3D modelling and environments and animations. That's not all, you'll also explore digital art and fundamental art skills, learn aspects of coding, and have the chance to share the games you have created. Plus, you'll be free to use our state-of-the-art facilities and equipment, including our high-spec computers, which run the industry standard software used within the course, such as Blender, Unity and Adobe Creative Suite. You'll also have access to our high-powered systems, games engines and photography studios to make your own practical media productions. Future-proof your career by developing key transferable skills that will allow you to enter a range of exciting digital industries.

Nurture your interest in the games industry and build the skills you'll need to creatively develop game ideas into actual games. From concept art to 3D animation and everything in between, learn how to create a game, bring your ideas to life, and turn your career aspirations into reality.

Possible career paths

- Concept Artist
- Character Designer
- Background/Environment Artist
- Games Tester
- Animator
- Illustrator
- Storyboard Artist
- Games Producer
- Gameplay Designer
- Visual FX
- User Experience Designer
- 2D/3D Modelling Artist

Complementary courses

- Esports
- Graphics
- Fine Art
- Photography
- Creative Computing
- Computer Science

Which Personal and Professional Development Programmes would benefit me if I took this course?

- Esports Teams
- Character Design Club
- Creative Writing Club
- Dungeons & Dragons
- Online Gaming Sessions & Geoguessr
- Digital Skills Champions

Take advantage of our high spec computers and use industry standard software such as Adobe Creative Suite, Unity, and other games design related programmes

ESPORTS
BTEC

Level:
3

Programme:
Single

Duration:
2 Years

Assessment:
100% Coursework

This course will equip you with the skills and knowledge to enter the world's fastest growing entertainment industry. From skills and strategy to player analysis, entrepreneurship, and health and wellbeing, here's your pathway to a dream esports career.

Benefit from our state-of-the-art Esports Suite

What will I learn?

Studying Esports provides you with a deep understanding of this rapidly expanding industry. As well as perfecting your play style, you'll explore the business side of things, turning you into a fully rounded esports entrepreneur with the skills you need to succeed. The course covers strategies, analysis, enterprise, and player health, wellbeing, and fitness. You'll also have the chance to join our very own in-house esports team – the Franklin Raiders. The team regularly signs up to the British Esports Student Championships and competes against over 100 other schools and colleges.

Possible career paths

- Professional Esports Player
- Esports Event Manager
- Esports Presenter
- Video Editor
- Social Media Content Creator
- Esports Producer

Complementary courses

- Digital Games Design
- Creative Computing
- Digital Film & TV Production

Which Personal and Professional Development Programmes would benefit me if I took this course?

- Esports Teams
- Character Design Club
- Dungeons & Dragons
- Online Gaming Sessions & Geoguessr
- Digital Skills Champions

Compete in the British Esports Championships against 100+ colleges across the UK!





MEDIA AND FILM

LATEST COURSE INFO



SKILLS

Critical analysis

Debate and discussion

Written communication

Time management
and organisation

Independent working

Planning and researching

Creative thinking

Sound recording

Teamwork

Problem solving

Working to deadlines

Technical equipment
and software skills

Project management

Team building

COURSES

CREATIVE MEDIA BTEC

Level:
2

Programme:
Double

Duration:
1 Years

Assessment:
100% Coursework

What will I learn?

This course could be your pathway to the exciting world of media. You'll look at a range of media platforms, such as film, magazines, photography, and audio production. You'll also study Creative Media alongside GCSE English and/or GCSE Maths. After successfully completing your course, you could progress to Level 3 and study courses such as Photography, Graphics, Film Studies, English, Business Studies, IT, Digital Games Design, and Esports.

100% pass rate for students
studying Creative Media

If you want to be the next big social media hit or an Oscar-winning director, this course is for you. Explore all aspects of media in a creative and exciting way, as you develop the industry skills you need to excel.

Which Personal and Skills Development Programmes would benefit me if I took this course?

- Film Club
- Creative Writing Club
- Esports Teams

DIGITAL FILM & TV PRODUCTION BTEC

Level:
3

Programme:
Single or Double

Duration:
2 Years

Assessment:
Combination of coursework and examination

What will I learn?

Studying Digital Film & TV Production will see you create short films, music videos, and other video products, and develop skills in lighting, cinematography, video editing, screenwriting, and sound recording. You can look forward to using industry-standard software, such as Adobe Creative Cloud, for all your creative work. Studying the course as a double option will allow you to go further, with topics on stop motion animation, media enterprise, and responding to a commission. Whether you take the single or double option, you'll still have the chance to visit film festivals, university taster days, and incredible places like Disneyland Paris.

Develop a creative portfolio alongside skills in film and TV production, covering all aspects of the industry from pre-right through to post- production. Gain a variety of valuable industry skills including editing, lighting, and screenwriting to take you where you want to go.

Possible career paths

- Camera Operator
- Cinematographer
- Director / Producer
- Video Editor
- Special Effects Supervisor
- Post-Production Coordinator
- Animator
- Scriptwriter
- Sound Technician

Complementary courses

- Film Studies
- Performing Arts
- Photography

Digital Film and TV is led by a
subject specialist with years of
industry experience

Which Personal and Professional Development Programmes would benefit me if I took this course?

- Film Club
- Creative Writing Club
- Photography Club

Previous students have gone
to work on Marvel and Disney
movies as well as popular TV
shows and Netflix series



FILM STUDIES A Level

Level:
3

Programme:
Single

Duration:
2 Years

Assessment:
Combination of coursework and examination

What will I learn?

Studying this thought-provoking course will immerse you in fascinating debates about why audiences react to films in a number of ways, the role and impact of a director, and a mix of political, social, cultural, and historical contexts. You'll study key movements in film history from the golden age of Hollywood, the contemporary American and British film scenes, experimental films, as well as global film and documentaries. This all culminates in the creation of your own short film or screenplay. You'll also gain valuable industry insights and experiences with trips to film festivals, studios, and university taster days and workshops.

Film Studies introduces you to an exciting and challenging variety of films to broaden your horizons and present you to new ideas. Discover different ways of telling stories and see the power of cinema as an art form. Put theory into practice by producing your own short film or screenplay.

Possible career paths

- Broadcast Presenter
- Film Director
- Film / Video Editor
- Location Manager
- Production Designer
- Programme Researcher
- Runner
- Camera Operator
- TV / Film / Video Producer
- Journalist
- Screenwriter

Complementary courses

- History
- Government & Politics
- English Literature
- Digital Film & TV Production
- Sociology

Which Personal and Professional Development Programmes would benefit me if I took this course?

- Creative Writing Club
- Photography Club

Former students have progressed on to careers in
VFX editing, photography, marketing, and teaching



PERFORMING ARTS, DRAMA, MUSIC AND DANCE

LATEST COURSE INFO



SKILLS

Independent learning

Teamwork

Performance and
presentation

Listening

Analytical and
essay writing

Confidence and
self-esteem

Creativity and
self-expression

Public speaking

Communication

Discipline

Organisation

Collaboration

Problem-solving

Self-assessment

Leadership

Coordination

COURSES

DRAMA & THEATRE STUDIES

A Level

Level:
3

Programme:
Single

Duration:
2 Years

Assessment:
Combination of performance assessment and exams

Calling anyone with a passion for performance and a love for playing a character on stage. If you want to pursue a future as an actor, director, or work behind the scenes, this course will help you carve out your dream career.

What will I learn?

Drama & Theatre Studies will introduce you to acting techniques by applying the methods of various theatre practitioners to your performances. Through a series of exciting and challenging workshops, you'll develop your command of realism in performance, learn how to create three-dimensional characters for a scripted performance, and experience other stylised forms of theatre practice. You'll also develop robust analytical and evaluative skills through a series of academic workshops. You'll visit a live theatre performance each year to support your studies, and there are plenty of opportunities to perform and showcase your work.

Possible career paths

- TV / Film / Radio Actor
- Drama Therapist
- Director
- Producer
- Theatre Technician
- Stage Manager
- Lighting Designer
- Costume Designer
- Community Arts Leaders
- Theatre Critic
- Drama Teacher

Complementary courses

- Performing Arts
- Music
- English Language
- English Literature
- Psychology
- Sociology

Which Personal and Professional Development Programmes would benefit me if I took this course?

- Drama Club
- Dance/Performance @Franklin
- Drama Production
- Singing group

100% Pass rate
for students
studying Drama &
Theatre Studies

PERFORMING ARTS

BTEC

Level:
3

Programme:
Single or Double

Duration:
2 Years

Assessment:
Combination of coursework and examination

If working within a creative and inspiring team with plenty of performance opportunities is your calling, Performing Arts is the right path for you. Don't worry if your singing, dancing, or acting isn't where you want it to be. Together, we'll help you develop your natural talents and nurture new ones.

What will I learn?

Throughout this course, you'll explore successful performers, enhance performance skills, and track self-development in vocal quality, timing, and more. Immerse yourself in workshops on key practitioners like Lin Manuel Miranda and Frantic Assembly. Learn, rehearse, and perform musical numbers from various shows, for example, Waitress, Heathers, and Les Misérables. Engage in highly creatively devised theatre workshops to create innovative performances. Choose from single or double modules, investigate practitioners' work, develop live performance skills, and participate in group and individual performances. You will also learn technical elements of performance, from staging and lighting to sound and music editing.

Performing Arts students have gone on to attend Mountview, Bird College, Arden, Emil Dale Academy, and LMA

Possible career paths

- Musical Theatre Performer
- Actor
- Dancer
- Vocal Coach
- Cruise Ship Performer
- Comedian
- Choreographer
- Drama Therapist
- Stage / Film / TV Director
- Dance / Music / Performing Arts Teacher
- Speech / Language Therapist
- Events Manger
- Voice Over Artist
- Disney Host / Performer
- Radio Presenter
- Costume Designer
- Photographer

Complementary courses

- Drama and Theatre Studies
- Music
- Dance
- English Language / Literature
- Health & Social Care
- Fashion & Textiles
- Photography

Which Personal and Professional Development Programmes would benefit me if I took this course?

- Drama Club
- Dance/Performance @Franklin
- Debate Club
- Singing group

100% Pass rate for
all courses

MUSIC

A Level

Level:
3

Programme:
Single

Duration:
2 Years

Assessment:
Combination of performance, composing and exams

Turn your passion into a career path with the A Level Music course. Develop your technical skills across performing, composing, listening, and appraising – all the while exploring the world of classical, pop, and jazz. Students often progress onto some of the UK’s finest music conservatoires or universities.

MUSIC

(PERFORMING – RQF)

BTEC

Level:
3

Programme:
Single

Duration:
2 Years

Assessment:
Combination of coursework and examination

What will I learn?

Studying a BTEC in Music (Performing – RQF) will build on your existing knowledge in core areas including performance skills, composition and listening skills, analytical and presentation skills, and careers in the music industry. The course involves written, analytic, practical, and social skills ranging from performance to self-expression. You’ll cover Practical Music Theory & Harmony, Professional Practice in the Music Industry, Ensemble Music Performance, and Composing Music. You’ll also be free to use our industry-standard recording studio. Additionally, visits to local venues and London’s West End will take your studies out of the classroom.

What will I learn?

A Level Music is divided into three core components: performance of instrumental or vocal; composition, and anthology of vocal, instrumental, film, pop, jazz, fusions, and new directions. You will have access to our industry-level recording studios and soundproofed spaces, as well as the opportunity to take part in music events and live concerts. But it doesn’t stop there, every half term, you’ll hear from expert industry speakers and get stuck into some amazing workshops. You’ll also develop a range of transferable skills from performance to independent learning, which will support your progression whatever future path you take.

Possible career paths

- Composer
- Live Events Producer
- Music Performer
- Music Journalist
- Music Manager
- Music Producer
- Production Stage Manager
- Songwriter
- Sound Engineer

Complementary courses

- Performing Arts
- Digital Film and TV Production
- Fine Art
- Photography

Which Personal and Professional Development Programmes would benefit me if I took this course?

- DancePerformance@Franklin
- Music Theory
- Instrumental Group

If you’re a musician looking to further develop your skills, knowledge, and understanding to get into higher education or music employment then this is the right course for you. Offering flexibility, industry insights, and practical music skills, this course will give you everything you need to achieve your dreams.

Possible career paths

- Songwriter
- Recording Artist
- Performer / Session Musician
- Music Promoter
- Music Manager
- Artist Support Services Provider
- Music Producer / Engineer

Complementary courses

- Performing Arts
- Digital Film and TV Production
- Maths
- Science
- French or Spanish
- Fine Art
- Photography

Which Personal and Professional Development Programmes would benefit me if I took this course?

- Dance/Performance @Franklin
- Music Theory
- Instrumental Group
- Singing Group

A BTEC In Music (Performing – RQF) will equip you with the skills to progress straight into the music industry. In many cases, you can undertake multiple roles as part of a ‘portfolio career’ in a freelance capacity

Dance will provide you with the skills to work effectively in teams, boost your confidence, and apply multi-disciplinary skills to various aspects of life, as well as to working in the dance industry.

DANCE

A Level

Level:
3

Programme:
Single

Duration:
2 Years

Assessment:
Combination of coursework and examination

Develop your dance abilities through contemporary and jazz techniques and pirouette into your dream future.

What will I learn?

Studying A Level Dance will see you learn about leading practitioners in the dance field including the Rambert Dance Company. You’ll also develop your choreographic ability with solo and group pieces and learn repertoire in groups to perform. Throughout the course, you’ll learn to enhance your analytical abilities to examine professional dance works and an area of dance history for written exams. Visits to the theatre are essential to support the development of your dance analysis and you will watch live professional dance works by leading touring companies such as Rambert, Motionhouse or Matthew Bourne. We will also visit the Move It conference in March to support industry development and progression.

Possible career paths

- Dancer
- Dance Movement therapy
- Creative arts worker
- Psychotherapist
- Arts Administrator
- Choreographer
- Community Arts Worker
- Higher Education Lecturer
- Secondary School Teacher

Complementary courses

- Performing Arts
- Drama and Theatre Studies
- Biology
- English Language
- English Literature
- Arts
- Physical Education

Which Personal and Professional Development Programmes would benefit me if I took this course?

- Dance/Performance @Franklin
- Sports Leaders
- Arts Award



PSYCHOLOGY, SOCIOLOGY, CRIMINOLOGY AND LAW

LATEST COURSE INFO



SKILLS

Application

Evaluation

Analysis

Organisation

Independence

Critical thinking

Problem-solving

Empathy

Awareness of human
behaviour

Written and verbal
communication

Evaluative and
analytical skills

Teamwork

Cultural awareness

Cultural understanding

COURSES

APPLIED PSYCHOLOGY

BTEC

Level:
3

Programme:
Single

Duration:
2 Years

Assessment:
Combination of coursework and examination

Applied Psychology is an excellent entry point into exploring different aspects of psychology. Best of all, psychology qualifications are highly sought after in a vast range of industries, ensuring you stand out from the crowd and get to where you want to be.

What will I learn?

Studying Applied Psychology will enable you to explore how psychological theory and research is used and applied in everyday situations such as gender, consumer behaviour, and dealing with aggression. You'll dive into a variety of fascinating topics including conducting psychological research, health psychology, and criminal and forensic psychology.

Possible career paths

- Chartered Psychologist
- Psychotherapist
- Therapist / Counsellor
- Child Psychologist
- Forensic and Criminal Psychologist
- Social Worker
- Mental Health Support Worker
- Teacher
- Researcher
- Business / Management / HR Professional
- Media / Advertising Professional

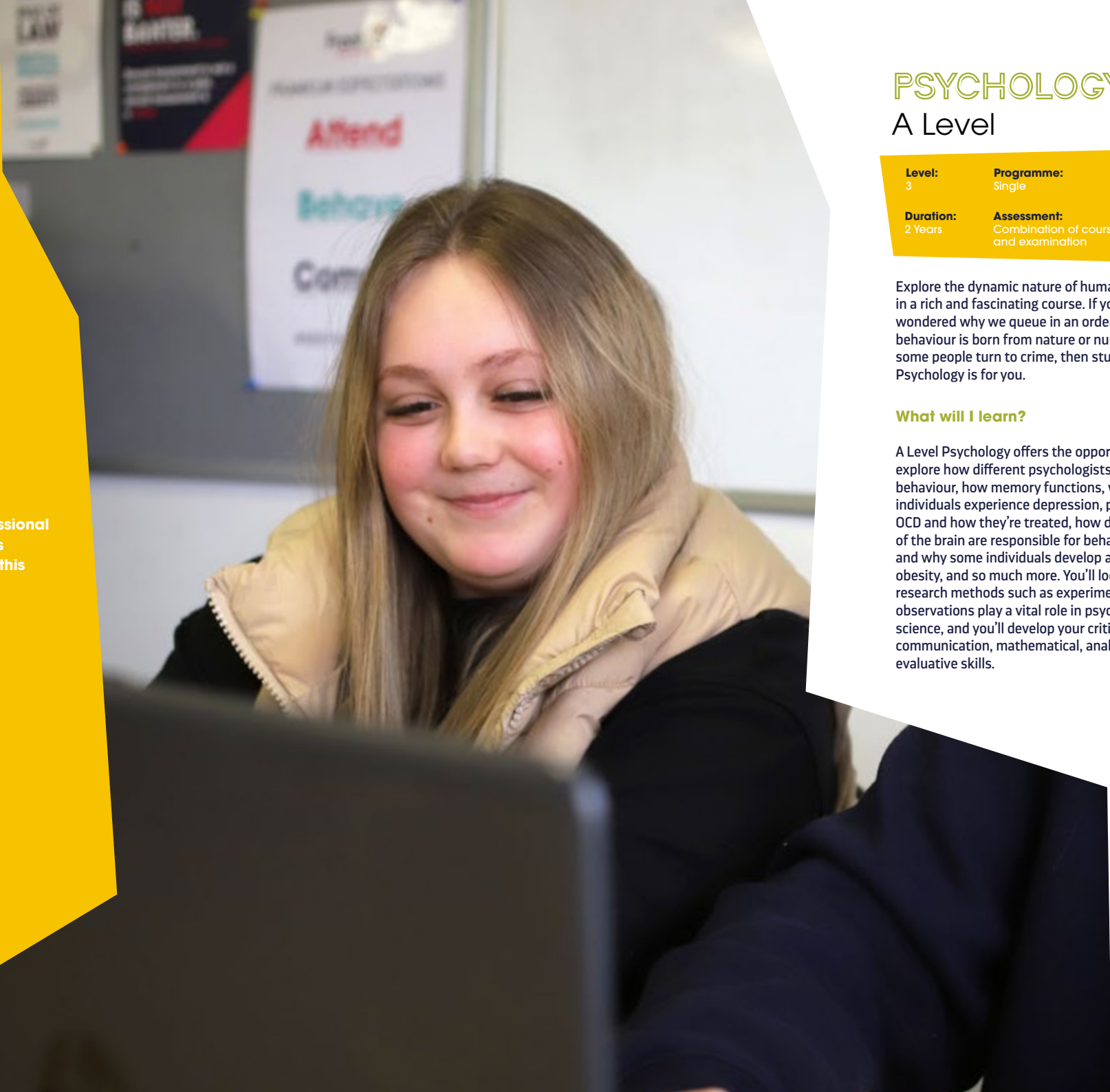
Complementary courses

- Sociology
- Law
- Government & Politics
- History
- Maths
- Biology
- Health & Social Care
- Criminology
- Applied Science
- English Language

Which Personal and Professional Development Programmes would benefit me if I took this course?

- EPQ
- Debate Club
- Teaching Academy
- Mental Health Academy
- Social Sciences Academy

100% pass rate for students studying Applied Psychology



PSYCHOLOGY

A Level

Level:
3

Programme:
Single

Duration:
2 Years

Assessment:
Combination of coursework and examination

Explore the dynamic nature of human behaviour in a rich and fascinating course. If you've ever wondered why we queue in an orderly fashion, if behaviour is born from nature or nurture, or why some people turn to crime, then studying A Level Psychology is for you.

What will I learn?

A Level Psychology offers the opportunity to explore how different psychologists explain behaviour, how memory functions, why some individuals experience depression, phobias, and OCD and how they're treated, how different areas of the brain are responsible for behaviour, how and why some individuals develop anorexia or obesity, and so much more. You'll look at how research methods such as experiments and observations play a vital role in psychology as a science, and you'll develop your critical thinking, communication, mathematical, analytical, and evaluative skills.

Possible career paths

- Chartered Psychologist
- Psychotherapist
- Social Worker
- Counsellor
- Educational Therapist / Psychologist
- Teacher
- Researcher
- Business / Management / HR Professional
- Media / Advertising Professional
- Health Care Worker

Complementary courses

- Sociology
- Law
- Government & Politics
- History
- Maths
- Biology
- Health and Social Care
- Criminology
- Applied Science
- English Language

Which Personal and Professional Development Programmes would benefit me if I took this course?

- EPQ
- Debate Club
- Teaching Academy
- Mental Health Academy
- Franklin Minds
- Social Sciences Academy

98% pass rate for students studying Applied Psychology

CRIMINOLOGY

WJEC

Level: 3	Programme: Single
Duration: 2 Years	Assessment: Combination of coursework and examination

If you want to learn more about why people commit crimes, how criminal behaviour can be explained by societal roles, and more, then Criminology is for you. A versatile course that can help pave the way for amazing careers and higher education opportunities.

What will I learn?

Criminology offers a dynamic range of topics to explore, including the changing awareness of crime, criminological theories, crime and punishment, and following the process from the crime scene to the courtroom. Studies will be supported using real-life cases such as Stephen Lawrence, the Wests, OJ Simpson, and many more. You'll also enjoy a practical element with mock crime scenes to nurture an understanding of crime scene forensics.

Possible career paths

- Scenes of Crime Officer
- Forensic Practitioner
- Criminal Justice Caseworker
- Victim Support
- Outreach Caseworker
- Social Worker
- Probation Worker
- Prison Officer
- Addiction Professional
- Police Professional
- Youth Offending Team Officer

Complementary courses

- Sociology
- Law
- Psychology
- Public Services
- Government & Politics

Which Personal and Professional Development Programmes would benefit me if I took this course?

- EPQ
- Law Career Academy
- Mock Trial
- Social Sciences Academy

97% of students studying Criminology progress to positive destinations

SOCIOLOGY

A Level

Level: 3	Programme: Single
Duration: 2 Years	Assessment: 100% Examination

If you have an interest in current affairs, Sociology could be the course for you. Consider the ways society and the world around us affect our behaviour from examining identities to experiences of discrimination.

What will I learn?

Throughout this fascinating Sociology course, you'll explore the reasons people commit crime and society's reaction, the influence of the media on our behaviour and the way we see other groups of people in society, reasons for differences in educational achievement, experiences of discrimination by different social groups, reasons individuals adopt different identities (such as gender), and the research methods sociologists use to study society. You can also look forward to studying why certain groups may commit crime, whether the media affects our behaviour and why some groups succeed more in education.

Possible career paths

- Social / Market Researcher
- Teacher
- Social Worker
- Counsellor
- Police Officer
- Probation Officer
- Journalist / PR officer
- Communications Officer
- Marketing Executive
- Local Government Officer
- Civil Service Officer
- Youth Worker
- Community Development Officer
- Housing Officer
- Charity Administrator
- HR Officer

99% pass rate for students studying Sociology

Complementary courses

- Psychology
- Criminology
- Law
- History
- Government & Politics
- English Language / Literature
- Film Studies

Which Personal and Professional Development Programmes would benefit me if I took this course?

- Social Work Academy
- Teaching Academy
- EPQ
- Debate Club
- Social Sciences Academy

APPLIED LAW

BTEC

Level:
3

Programme:
Single

Duration:
2 Years

Assessment:
Combination of coursework and assessment

If working in law is your dream job, then this course is perfect for you. Experience law in a practical setting and debate your way through Mock Trial and Mooting competitions.

What will I learn?

You'll study how to advise a client and act in the role of a legal advisor when completing engaging coursework projects and controlled exams. Key course topics include the English legal system, law making, criminal law, and tort law. As part of your studies, you'll experience law in a vocational context and have the opportunity to analyse and apply how laws are made. Project based learning will help you to strengthen your knowledge of the law and apply it to current issues. Personal and Professional Development programmes including Mock Trial and Debate Club will help to further hone the skills you'll develop by taking this course.

Possible career paths

- Social Worker
- Counsellor
- Solicitor
- Barrister
- Police Officer
- Probation Officer
- Local Government Officer
- Civil Service Officer
- Youth Worker
- Community Development Officer

Complementary courses

- Criminology
- Uniformed Protective Services
- Sociology
- Business

Which Personal and Professional Development Programmes would benefit me if I took this course?

- Law Career Academy
- Debate Club
- Mock Trial
- Social Sciences Academy

LAW

A Level

Level:
3

Programme:
Single

Duration:
2 Years

Assessment:
100% Examination

Do you have a passion for debating, an interest in solving complex criminal and civil law issues? If so, A Level Law is the course for you. A solid understanding of the law will be a valuable asset and can give you a head start in your chosen career.

What will I learn?

You'll explore how the law regulates all aspects of life, rightly or wrongly, and consider how morals and public policy impact the development of our lives. Key topics include criminal law, tort law, and human rights law. You'll enhance your studies with lively debates, mock trials, and case studies. A Level Law is an excellent foundation for studying the subject at degree level. Thanks to our state-of-the-art 360° Immersive Space, you'll be able to enter a courtroom without ever having to step foot off campus.

Possible career paths

- Social Worker
- Counsellor
- Solicitor
- Barrister
- Police Officer
- Probation Officer
- Local Government Officer
- Civil Service Officer
- Youth Worker
- Community Development Officer

Complementary courses

- Government & Politics
- Sociology
- History
- Criminology
- English Language

Which Personal and Professional Development Programmes would benefit me if I took this course?

- Law Career Academy
- Debate Club
- Mock Trial
- High Flyers
- Social Sciences Academy

Benefit from work experience & post-college opportunities. We enjoy strong links with local law firms including Wilkin Chapman, Bridge McFarland, and Sills and Betteridge



SCIENCE, MATHS AND ENGINEERING

LATEST COURSE INFO



SKILLS

Cognitive and
problem-solving skills

Interpersonal skills

Independent learning

Presentation skills

Mathematical reasoning

Data analysis

Evaluation of practical
methods

Time management

Communication skills

Research and
quantitative skills

Logical reasoning

Critical thinking

Resilience and
perseverance

Teamwork and
collaboration

COURSES

MATHS

GCSE

Level:
2

Programme:
Single

Duration:
1 Year

Assessment:
100% Examination

Taught by dedicated, mathematical experts, this course will help you gain your GCSE Maths qualification in an engaging and approachable way. Best of all, you can study alongside your other course choices.

What will I learn?

Studying GCSE Maths at Franklin gives you the best possible opportunity to progress and gain confidence. You'll explore a key range of topics, including algebra, geometry, statistics, ratio, and proportion. You'll develop a wealth of maths knowledge alongside building a bank of transferable skills such as problem-solving, data analysis, communication, logical thinking, and attention to detail.

At Franklin, we're well above the national average for improving student entry grades and progression to achieve the national pass of Grade 4

MATHS

A Level

Level:
3

Programme:
Single

Duration:
2 Years

Assessment:
100% Examination

Explore a wide range of exciting topics by studying A level Maths and unlock a whole host of amazing career and higher study opportunities.

What will I learn?

Pure maths makes up two thirds of this fascinating course, building on your knowledge in algebra and trigonometry. It also introduces calculus and the study of continuous change. The last third of the course is made up of mechanics and statistics. Throughout your studies, you'll use a graphing calculator to solve problems and evolve your mathematical understanding. Trips to universities and guest speakers will provide even more opportunities for you to develop and nurture your skills and awareness.

Possible career paths

- Actuary
- Teacher
- Chemical Engineer
- Aerospace Engineer
- Data Analyst
- Computer Scientist
- Stockbroker
- Computer Scientist
- Astronaut

100% pass rate
for students
studying A level Maths

Complementary courses

- Biology
- Chemistry
- Physics
- Engineering
- Computer Science
- Psychology
- Further Maths

Which Personal and Professional Development Programmes would benefit me if I took this course?

- STEM Career Academy
- High Flyers
- Maths Challenge

FURTHER

MATHS

A Level

Level:
3

Programme:
Double

Duration:
2 Years

Assessment:
100% Examination

If you love maths and hunger for a deeper, broader knowledge, then this course is for you. A Further Maths qualification will open the door to top tier universities including Oxbridge and unlock amazing career opportunities.

100% pass rate
for students
studying Further Maths

What will I learn?

Further Maths combines compulsory and optional modules for a flexible and fascinating course. The former will see you study further calculus and complex numbers. Decision maths includes solving real life logistic problems that may involve computer or road networks. Mechanics includes the study of forces and motion. Statistics is about the collection, organisation, analysis, and interpretation of numerical data.

Possible career paths

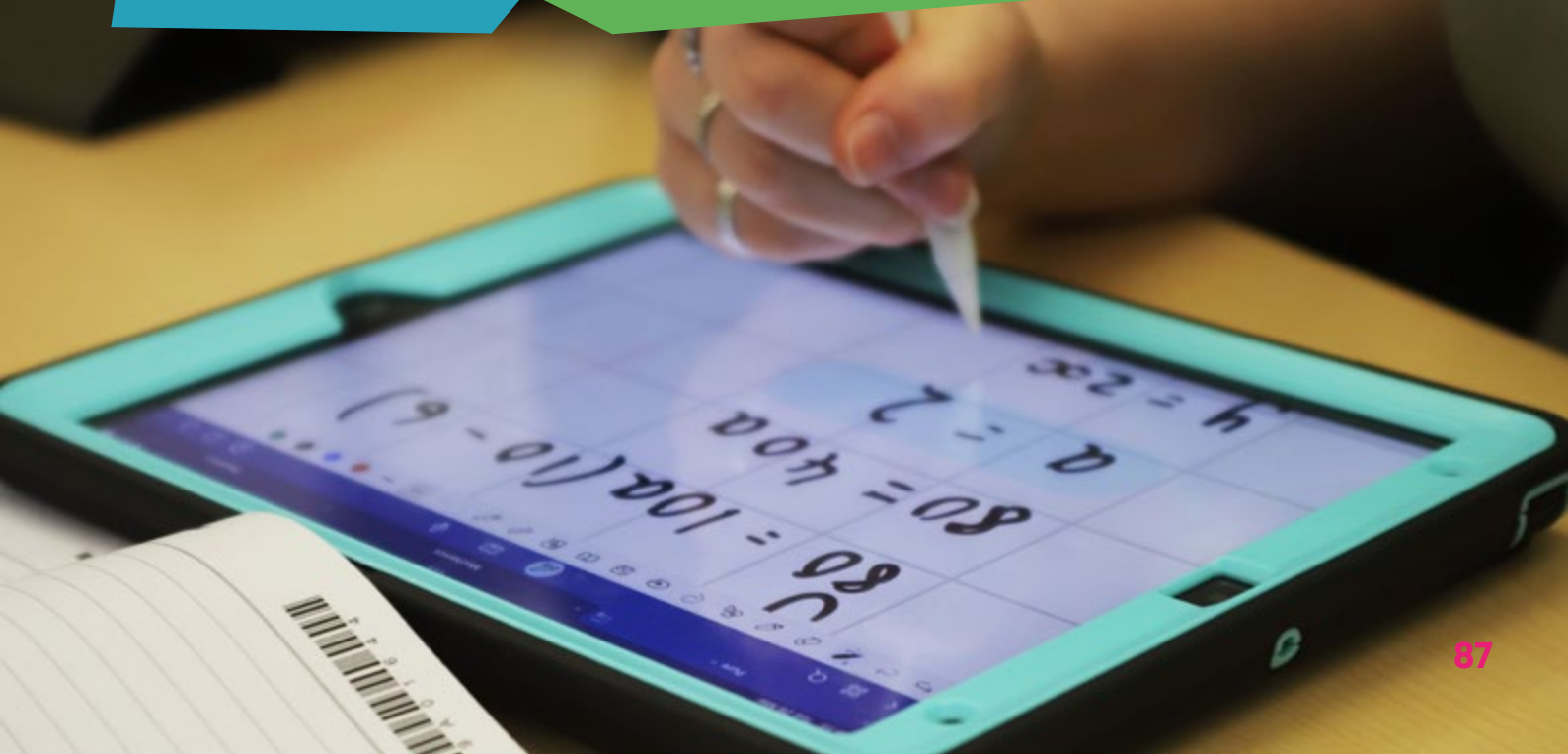
- Actuary
- Teacher
- Chemical Engineer
- Aerospace Engineer
- Lawyer
- Data Analyst
- Computer Scientist

Complementary courses

- Biology
- Chemistry
- Physics
- Engineering
- Psychology
- Computer Science

Which Personal and Professional Development Programmes would benefit me if I took this course?

- STEM Career Academy
- High Flyers
- Maths Challenge



BIOLOGY

A Level

Level:
3

Programme:
Single

Duration:
2 Years

Assessment:
100% Examination

If dealing with the challenges posed by climate change and feeding a growing population keep you up at night, Biology is the course for you. A challenging but rewarding course, Biology offers a fascinating scientific insight into life on our planet.

What will I learn?

Studying Biology will introduce you to recent biological advances, including the influence of genetics, environmental issues, and some of the ethical and technological aspects of natural science. As a practical subject, you'll develop experimental skills sought after by industry and academia including how to plan, analyse, and evaluate experimental procedures. Biology is often essential for higher level medical related courses but is also highly regarded by universities as a foundation for many science-related degrees.

Possible career paths

- Medical Biologist
- Veterinary Medicine
- Dentistry
- Nursing
- Physiotherapy
- Supporting Healthcare Roles (e.g. Radiographer)
- Forensic Scientist
- Biomedical Scientist
- Sports Scientist
- Zoologist
- Pharmaceutical Scientist

Complementary courses

- Chemistry
- Maths
- Physics
- Psychology
- Sport

Which Personal and Professional Development Programmes would benefit me if I took this course?

- Aspiring Future Medics
- STEM Career Academy
- Health & Social Care Career Academy
- Allied Health Professionals
- Environmental Champions
- Franklin Minds

APPLIED HUMAN BIOLOGY

BTEC

Level:
3

Programme:
Single

Duration:
2 Years

Assessment:
Combination of coursework and examination

What will I learn?

Studying Applied Human Biology will see you explore the details of important human biological processes, then link them to common health and healthcare issues. You'll study a variety of topics from microbiology and infectious diseases to the main aspects of the human body, such as the circulatory system, cells, tissues, and biological molecules. Moving onto Year 2, you'll examine health issues related to the human systems studied in the previous year.

Possible career paths

- Nurse
- Doctor
- Biomedical Scientist
- Health & Social Care Worker
- Sport Scientist
- Physiotherapist
- Midwife
- Occupational Health Workers
- Forensic Scientist

Complementary courses

- Sport
- Physical Education
- Health and Social Care

Which Personal and Professional Development Programmes would benefit me if I took this course?

- STEM Career Academy
- Aspiring Future Medics
- Franklin Minds

Did you know the NHS is the UK's biggest employer and the 5th biggest employer in the world?

PHYSICS

A Level

Level:
3

Programme:
Single

Duration:
2 Years

Assessment:
100% Examination

Physics is a fusion of maths and science. As part of this course, you'll study both. Use Physics as a tool to decode the forces of nature, matter, and energy, and develop the skills needed to understand the invisible to the unimaginably large.

What will I learn?

Studying A Level Physics will see you explore a whole host of fascinating topics including mechanics, materials, particles and quantum phenomena, thermal properties, radioactivity, nuclear physics, and many more. Throughout the course core, activities form a thread linking theoretical knowledge to practical scenarios, building a broad working knowledge. All Physics students must also take A Level Maths, providing all the skills and understanding you'll need to excel in your chosen field.

Possible career paths

- Engineer
- Medical Physicist
- Business / Finance Professional
- Lawyer

Complementary courses

- Further Maths
- Chemistry
- Computer Science

Which Personal and Professional Development Programmes would benefit me if I took this course?

- Faulkes Telescope
- Environmental Champions

Students studying Physics achieved 100% positive destination with 95% progression to higher education

CHEMISTRY

A Level

Level:
3

Programme:
Single

Duration:
2 Years

Assessment:
100% Examination

If your future lies in molecular engineering, synthesising the next aspirin, or even law, studying Chemistry is the perfect path for you. Develop your lab skills alongside your theoretical knowledge and have the chance to participate in the RSC Junior Analyst competition.

What will I learn?

Build on the knowledge you acquired at GCSE level, including organic chemistry, rates, reversible reactions, and chemical calculations. You'll use your mathematical skills to solve problems and your imagination to understand how molecules interact and why they react together. Core units of the course include Development of Practical Skills in Chemistry, Foundations in Chemistry, The Periodic Table and Energy, Core Organic Chemistry, Physical Chemistry & Transition Elements, and Organic Chemistry and Analysis. As an essential qualification for higher level medical-related courses, studying Chemistry will help unlock your chosen future.

Possible career paths

- Chemist
- Biomedical Scientist
- Biotechnologist
- Chemical Engineer
- Medical Diagnostic Laboratory Technician
- Dentist
- Veterinary Scientist
- Pharmacist

Complementary courses

- Biology
- Physics
- Maths
- Engineering
- Applied Human Biology

Which Personal and Professional Development Programmes would benefit me if I took this course?

- STEM Career Academy
- Aspiring Future Medics
- High Flyers



100% positive destinations for students studying Chemistry

ENGINEERING CTEC

Level: 3	Programme: Double
Duration: 2 Years	Assessment: Combination of coursework and examination

If you love solving problems and thinking creatively, this is the course for you. Studying Engineering will open up a range of exciting careers – from energy to aviation and beyond – and help you develop your skills in the design, development, manufacture, and maintenance of engineering products and systems.

What will I learn?

As well as physics and maths, you'll study a variety of different forms of engineering with a major focus on electrical. You'll learn how to design and test electronic circuits on printed circuit boards along with the use of simulation software in electronics. Use computer-aided design (CAD) software to design 3D products and learn how to programme a microchip and use it to control circuitry in project work. You'll also be able to visit local universities and take part in projects and development programmes to gain valuable industry insights.

Possible career paths

- Electrical / Electronic Engineer
- Design Engineer
- Civil Engineer
- Software Engineer
- Process Engineer
- Aerospace Engineer
- Energy Engineer

Complementary courses

- Maths

Which Personal and Professional Development Programmes would benefit me if I took this course?

- STEM Career Academy
- Faulkes Telescope
- Franklin Minds

APPLIED SCIENCE BTEC

Level: 3	Programme: Single or Double
Duration: 2 Years	Assessment: Combination of coursework and examination

If you're a budding scientist, this is the course for you. Study key scientific ideas and refine your lab skills as you open up a variety of different career paths including biomedical science, pharmacology, and law.

What will I learn?

Studying Applied Science will see you study the application of science through applied and practical learning, focusing on biology, chemistry, and physics. You'll gain valuable experience in managing the entire scientific process. You can expand your knowledge with the double option, and should you want to take your studies further, the triple will allow you to choose between an Applied Science or Biomedical Science route. You will take part in visits to local employers and universities, where you will witness how the science you learn in the classroom is applied in a real-world context. Plus, you will also undertake overseas trips, which will broaden your knowledge and understanding.

Possible career paths

- Laboratory Researcher
- Pharmacist
- Molecular Biologist
- Field Application Scientist
- Application Scientist
- Field Support Scientist
- Medical Science Liaison
- Technical Support Scientist

Complementary courses

- Maths
- Engineering
- Applied Human Biology

Which Personal and Professional Development Programmes would benefit me if I took this course?

- STEM Career Academy
- Faulkes Telescope
- Franklin Minds



In partnership with the University of Hull, our Engineering course familiarises students with university studies and provides the best possible advice and guidance for students progressing to degree level Engineering and, ultimately, into successful careers in the industry.



SPORT AND UNIFORMED PROTECTIVE SERVICES

LATEST COURSE INFO



SKILLS

Coaching

Teamwork

Communication

Leadership

Research

Evaluation and analysis

Application

Organisation

Confidence

Officiating

Employability skills

Time management

COURSES

SPORT
BTEC

Level: 3	Programme: Single or Double
Duration: 2 Years	Assessment: Combination of coursework and examination

Possible career paths

- PE Teacher
- Sport / Exercise Scientist
- Sports Psychologist
- Sports Coach
- Sports Development Officer
- Sports Journalist
- Sport Rehabilitator

Complementary courses

- Biology
- Business
- Criminology
- Psychology
- Sociology
- Physical Education
- Uniformed Protective Services

Which Personal and Professional Development Programmes would benefit me if I took this course?

- Competitive Sports Teams
- Recreational Sport
- Lunch time and after College sports
- Sports Leadership Academy
- Journalism Club
- Talented Athlete Support Scheme
- Dance

Do you have a passion for sport and dream of progressing onto an exciting career in the industry? Nurture deep knowledge and transferable skills that will help you realise your dreams as you prepare to work in the world of sport.

What will I learn?

During this interesting course, you'll look at anatomy and physiology, fitness training and programming, professional development in the sports industry, the application of fitness testing, investigating business in sport/physical activity, sports coaching, skill acquisition, and sports leadership. To support your studies and help you prepare for life after Franklin, you'll also have the chance to go on various trips and visits and take part in workshops held by a range of universities.



Study your Level 3 Sports Leaders Award alongside any of our courses



PHYSICAL
EDUCATION
A Level

Level: 3	Programme: Single
Duration: 2 Years	Assessment: Combination of coursework and examination

If you're passionate about all things active, studying Physical Education will allow you to explore a range of topics in depth, apply these to your own practical performance, and inspire you into various sport-related careers or higher-level study.

What will I learn?

On this A Level Physical Education course, you'll study a broad range of interesting topics, including anatomy, exercise, physiology, sports injuries, skill acquisition, sports psychology, historical, social and cultural issues in sports, and practical performance in one sport. Step outside the classroom with visits to local employers and participate in masterclasses at various universities, furthering your knowledge on topics, such as biomechanics and V02 Max Testing. You will also have the chance to take part in trips to Malta and Italy, giving you invaluable coaching opportunities and the chance to participate in team sports.



100% Pass rate
studying Level 2
Public Services

Possible career paths

- PE Teacher
- Sports Scientist
- Sports Psychologist
- Sports Coach
- Sports Development Officer
- Sports Journalist
- Sports Rehab
- Youth Worker
- Dietitian / Nutritionist
- Leisure / Tourism Professional

Complementary courses

- Applied Human Biology
- Sociology
- Psychology
- Business

Which Personal and Skills Development Programmes would benefit me if I took this course?

- Competitive Sports Teams
- Recreational Sport
- Sports Leadership Academy
- Journalism Club
- Talented Athlete Support Scheme

100% pass rate
studying Physical
Education

PUBLIC
SERVICES
BTEC

Level: 2	Programme: Double
Duration: 1 Years	Assessment: Combination of coursework and examination

Exciting topics and practical activities linked to the police, NHS, fire and armed services ensures this course is an ideal entry into public services. Perfect if you want to prepare for our Level 3 Uniformed Protective Services course, or if you're looking to pursue a career in the public or protective services.

What will I learn?

On this fascinating one-year course, you'll explore working skills and employment and sports and recreation in the public services, citizenship and diversity, crime and its effects on society, and health and lifestyle. You'll also embark on trips and visits, allowing you to meet different forces and representatives from a variety of charities and organisations. If that isn't enough, you'll also be able to take part in activities with the Army, Royal Marines, and the local authority.

Complementary courses

- GCSE Maths
- GCSE English

Which Personal and Professional Development Programmes would benefit me if I took this course?

- Sports Teams
- Sports Leadership Academy
- Uniform/Public Services visits and workshops

UNIFORMED PROTECTIVE SERVICES

BTEC

Level:
3

Programme:
Single or Double

Duration:
2 Years

Assessment:
Combination of coursework and examination

If you're interested in progressing into any public service, this course will prepare you with specific employability skills and knowledge. It's far from completely classroom based with various trips and practical activities linked to the police, NHS, fire, and armed services.

What will I learn?

Studying this course will provide you with deep insight into behaviour and discipline, teamwork, leadership, and communication in the Uniformed Protective Services, as well as an introduction to criminology, police powers, and the law. Year 2 will see you explore citizenship and diversity, physical preparation, health and wellbeing, government and the protective services, and developing personal fitness programmes. A range of fun trips and fascinating guest speakers will help bring lessons to life, with previous years enjoying army assault courses and joining the Royal Marines as part of their open day recruitment event.

Possible career paths

- Police
- Army
- Navy
- Air Force
- NHS
- Fire Service

Complementary courses

- Sport
- Criminology
- Psychology
- Law

Which Personal and Professional Development Programmes would benefit me if I took this course?

- Sports Teams
- Sports Leadership Academy
- Uniform/Public Services visits and workshops

Previous Uniformed Protective Services students have enjoyed trips to the Fire Service, Hull Prison, Melton Police Station, paintballing at Elsham Hall, and activities led by Army, Navy, and Air Force personnel



GTFC FOOTBALL SHADOW SCHOLARSHIP

BTEC

Level:
3

Programme:
Triple

Duration:
2 Years

Assessment:
100% Coursework

Delivered in partnership with Grimsby Town Sports & Education Trust, this course is perfect if you want a chance to represent our Grimsby Town FC Football Shadow Scholarship team whilst studying for a career in sport. Unique work experience opportunities will also help you to develop in the coaching and performance field.

The Grimsby Town FC Football Shadow Scholarship team has won various English Football League national titles over the last three years

GTFC GIRLS FOOTBALL SHADOW SCHOLARSHIP

Level:
3

Programme:
Flexible

Duration:
2 Years

Assessment:
Combination of coursework and examination

The popular Grimsby Town Girls Shadow Scholarship is an exciting programme aimed at talented footballers.

What will I learn?

You can study and play football whilst representing a youth team sports apprenticeship. You'll train four times a week and then compete against teams for other professional football clubs, taking part in a regional league and entering several national cup competitions. When it comes to study, you'll explore careers in sport and active leisure, self-employment in sport, sports development in the UK, health and wellbeing in sport, officiating, coaching, and assisting coaching sport, anatomy and physiology, planning sports events, research in sport, fitness training, and sports nutrition.

Possible career paths

- PE Teacher
 - Sport / Exercise Scientist
 - Sports Psychologist
 - Sports Coach
- Sports Development Officer
 - Sports Journalist
 - Sports Rehabilitator

Which Personal and Professional Development Programmes would benefit me if I took this course:

- Sports Leaders
- Talented Athlete Support Scheme
- Professional Football Coaching



The scholarship programme allows female athletes to combine football development and education. If you're interested in this programme, you should select this option at application, plus the courses you want to study alongside the GTFC Scholarship programme. Successful applicants will:

- Train twice a week with high-level Grimsby Town FC Foundation coaches and represent Grimsby Town FC Foundation U19 in the EFL CEFA League, competing against other shadow teams in the country
- Build a personalised Study Programme of choice with Franklin Sixth Form College, select from Franklin's fantastic range of courses to develop the most suitable programme to support your educational aspirations.

What will I learn?

- Personalised Study Programme of our choice
- Elite coaching twice a week
- Compete in EFL CEFA League

Which Personal and Professional Development Programmes would benefit me if I took this course:

- Sports Leaders
- Talented Athlete Support Scheme
- Professional Football Coaching

Possible career paths

- PE Teacher
- Sport / Exercise Scientist
- Sports Psychologist
- Sports Coach

Ancient History, History,
Government and Politics,
Geography and Philosophy and
Ethics

Ancient History	A Level	32
History	A Level	32
Government & Politics	A Level	33
Geography	A Level	34
Philosophy and Ethics	A Level	35

Art, Design
and Fashion

Fine Art	A Level	38
Art, Media & Design	Foundation Diploma	38
Graphics	A Level	39
Fashion & Textiles	A Level	40
Photography	A Level	41
Photography	CTEC (Level 3)	41

Business, Finance,
Economics and Travel

Business	BTEC (Level 2)	44
Business	BTEC (Level 3)	44
Business Studies	A Level	45
Economics	A Level	46
Travel & Tourism	BTEC (Level 2)	47
Travel & Tourism	BTEC (Level 3)	47
Management & Administration	T Level (Level 3)	48
Finance	T Level (Level 3)	49

English and Modern
Foreign Languages

English Language	GCSE	52
English Language	A Level	52
English Literature	A Level	53
French	A Level	54
Spanish	A Level	55

Health, Social, Education
and Early Years

Health & Social Care	CTEC (Level 2)	58
Health & Social Care	CTEC (Level 3)	58
Education & Early Years	T Level (Level 3)	59
Heath (Supporting Adult Nursing)	T Level (Level 3)	59

IT, Computing
and Esports

Creative Computing	CTEC (Level 2)	62
Creative Computing	CTEC (Level 3)	62
Computer Science	A Level	63
Digital Games Design	BTEC (Level 3)	64
Esports	BTEC (Level 3)	65

Media and Film

Creative Media	BTEC (Level 2)	68
Digital Film & TV Production	BTEC (Level 3)	68
Film Studies	A Level	69

Performing Arts, Drama,
Music and Dance

Drama & Theatre Studies	A Level	72
Performing Arts	BTEC (Level 3)	73
Music	A Level	74
Music (Performing – RQF)	BTEC (Level 3)	74
Dance	A Level	75

Psychology, Sociology,
Criminology and Law

Applied Psychology	BTEC (Level 3)	78
Psychology	A Level	79
Criminology	WJEC (Level 3)	80
Sociology	A Level	81
Applied Law	BTEC (Level 3)	82
Law	A Level	83

Science, Maths
and Engineering

Maths	GCSE	86
Maths	A Level	86
Further Maths	A Level	87
Biology	A Level	88
Applied Human Biology	BTEC (Level 3)	88
Physics	A Level	89
Chemistry	A Level	89
Engineering	CTEC (Level 3)	90
Applied Science	BTEC (Level 3)	91

Sport and
Public Services

Sport	BTEC (Level 3)	94
Physical Education	A Level	95
Public Services	BTEC (Level 2)	95
Uniformed Protective Services	BTEC (Level 3)	96
Grimsby Town Football		
Shadow Scholarship	BTEC (Level 3)	97
GTFC Girls Football		
Shadow Scholarship		97



Please note: Details in this course guide were correct at the time of going to print but may be subject to change without prior notice should circumstances dictate. Whilst every attempt has been made to ensure the accuracy of the information provided, the College reserves the right to make amendments without notice. Courses will only run subject to minimum enrolments. The College reserves the right to refuse individuals' entry to courses in certain circumstances. Prospective students may be advised of more suitable alternatives, if appropriate.



Franklin Sixth Form College,
Chelmsford Avenue, Grimsby,
North East Lincolnshire DN34 5BY
T. **01472 875 000** | E. **admissions@franklin.ac.uk**
www.franklin.ac.uk

Follow Franklin:   